

兔抗 CCNE1(Ab-395) 多克隆抗体

中文名称：兔抗 CCNE1(Ab-395) 多克隆抗体

英文名称： Anti-CCNE1(Ab-395) rabbit polyclonal antibody

别名： CCNE

相关类别： 一抗

储存： 冷冻（-20℃） 避光

宿主： Rabbit

抗原： CCNE1(Ab-395)

反应种属： Human

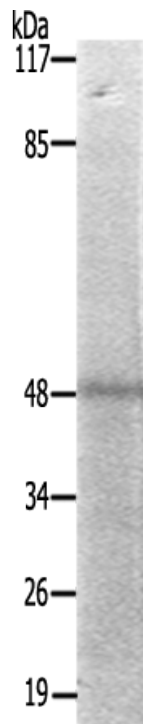
标记物： Unconjugate

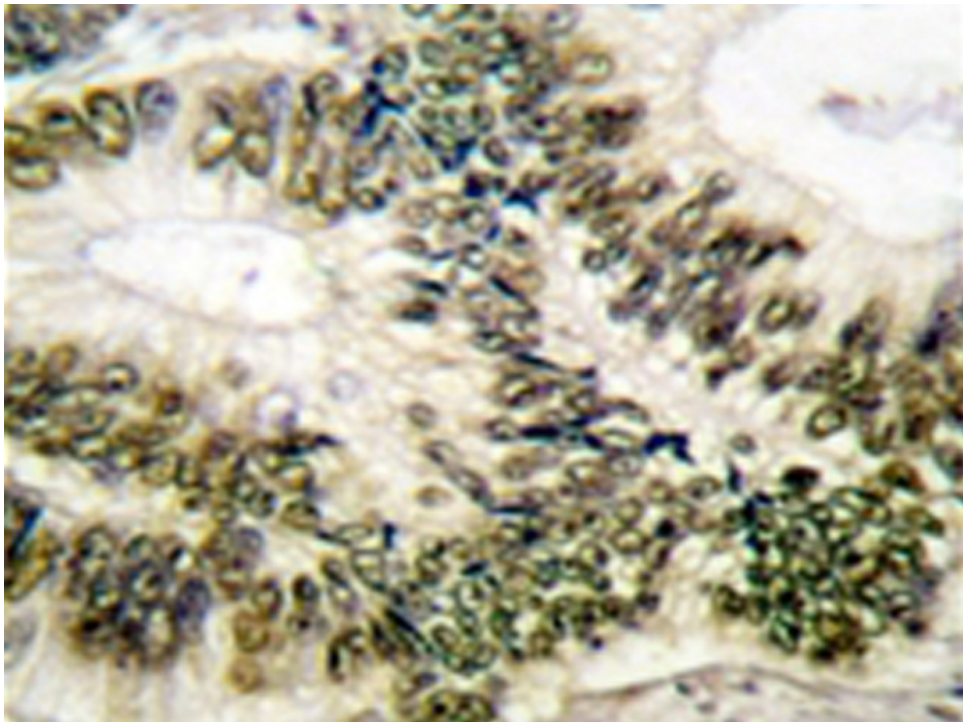
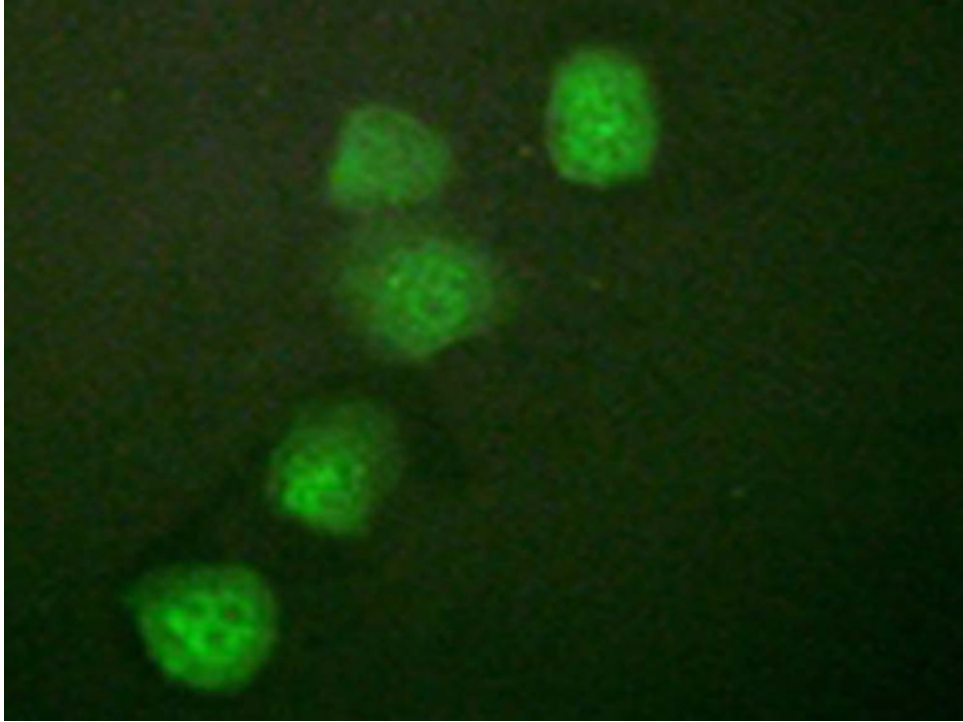
克隆类型： rabbit polyclonal

技术规格

Background:	The protein encoded by this gene belongs to the highly conserved cyclin family, whose members are characterized by a dramatic periodicity in protein abundance through the cell cycle. Cyclins function as regulators of CDK kinases. Different cyclins exhibit distinct expression and degradation patterns which contribute to the temporal coordination of each mitotic event.
Applications:	WB, IHC, IF
Name of antibody:	CCNE1(Ab-395)
Immunogen:	Synthesized non-phosphopeptide derived from huma

	n Cyclin E1 around the phosphorylation site of threonine 395 (L-L-T-P-P).
Full name:	cyclin E1
Synonyms :	CCNE
SwissProt:	P24864
IHC positive control:	Human colon carcinoma tissue
IHC Recommend dilution:	50-100
WB Predicted band size:	47 kDa
WB Positive control:	Hela cells treated with Paclitasel (1uM, 60mins) lysate
WB Recommended dilution:	500-3000
IF positive control:	Huvec cells
IF Recommend dilution:	100-500





mlbio 梅联生物
Good elisakit producers