

兔抗 DNALI1 多克隆抗体

中文名称：兔抗 DNALI1 多克隆抗体

英文名称：Anti-DNALI1 rabbit polyclonal antibody

别名：dynein axonemal light intermediate chain 1; P28; hp28; dJ423B22.5

相关类别：一抗

储存：冷冻（-20℃）

宿主：Rabbit

抗原：DNALI1

反应种属：Human, Mouse, Rat

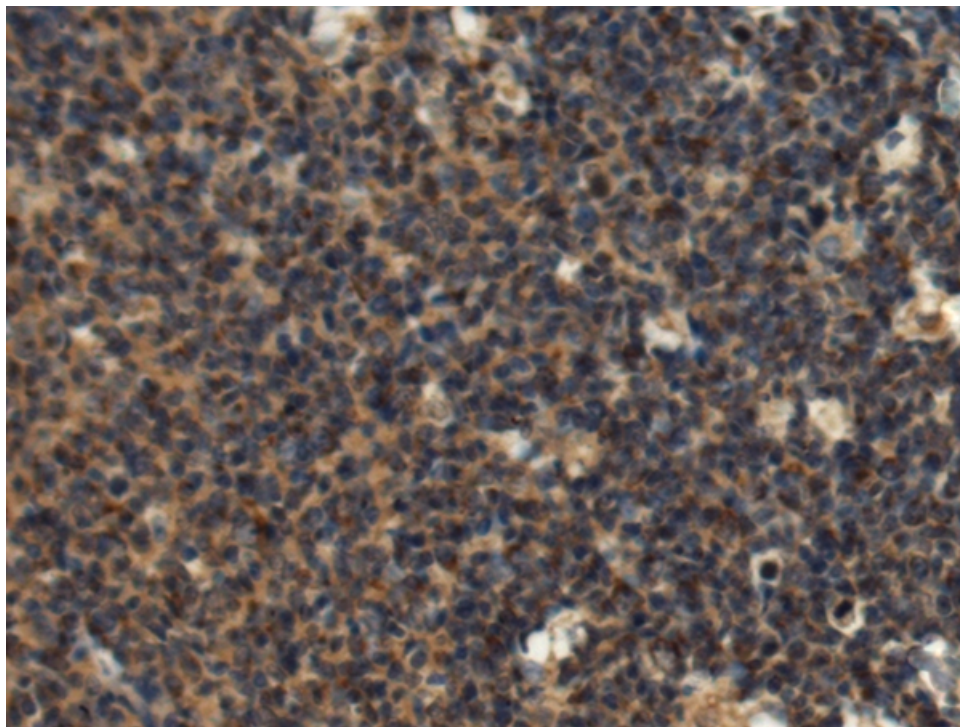
标记物：Unconjugate

克隆类型：rabbit polyclonal

技术规格

Background:	This gene is the human homolog of the Chlamydomonas inner dynein arm gene, p28. The precise function of this gene is not known, however, it is a potential candidate for immotile cilia syndrome (ICS). Ultrastructural defects of the inner dynein arms are seen in patients with ICS. Immotile mutant strains of Chlamydomonas, a biflagellated algae, exhibit similar defects. [provided by RefSeq, Jul 2008]
Applications:	ELISA, IHC
Name of antibody:	DNALI1
Immunogen:	Fusion protein of human DNALI1

Full name:	dynein axonemal light intermediate chain 1
Synonyms:	P28; hp28; dJ423B22.5
SwissProt:	O14645
ELISA Recommended dilution:	5000-10000
IHC positive control:	Human tonsil
IHC Recommend dilution:	150-300



mlbio 梅联生物
Good elisakit producers