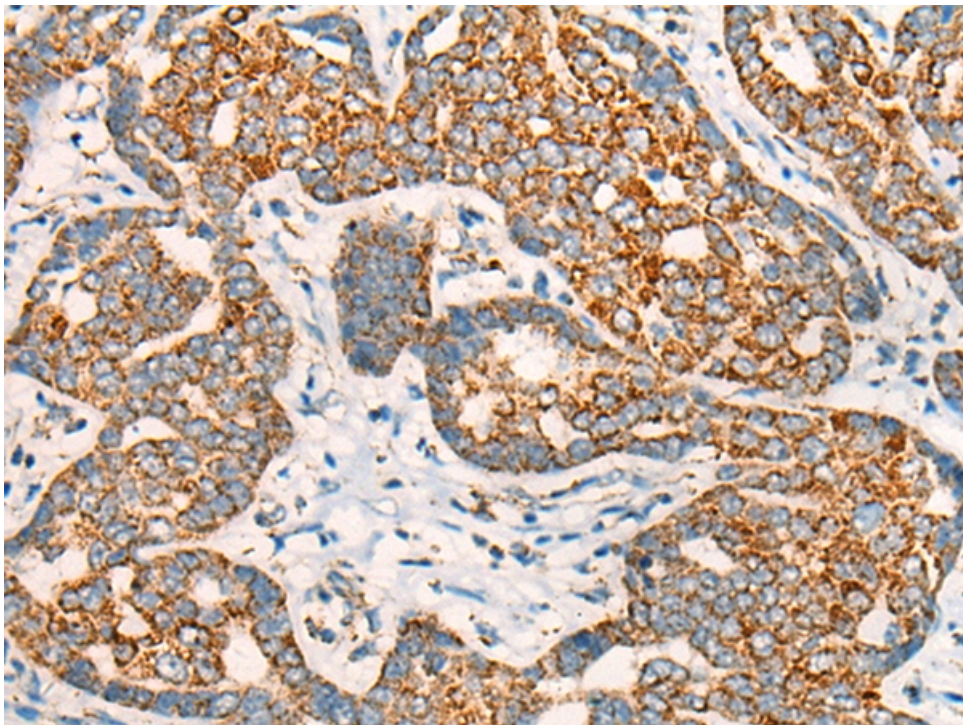
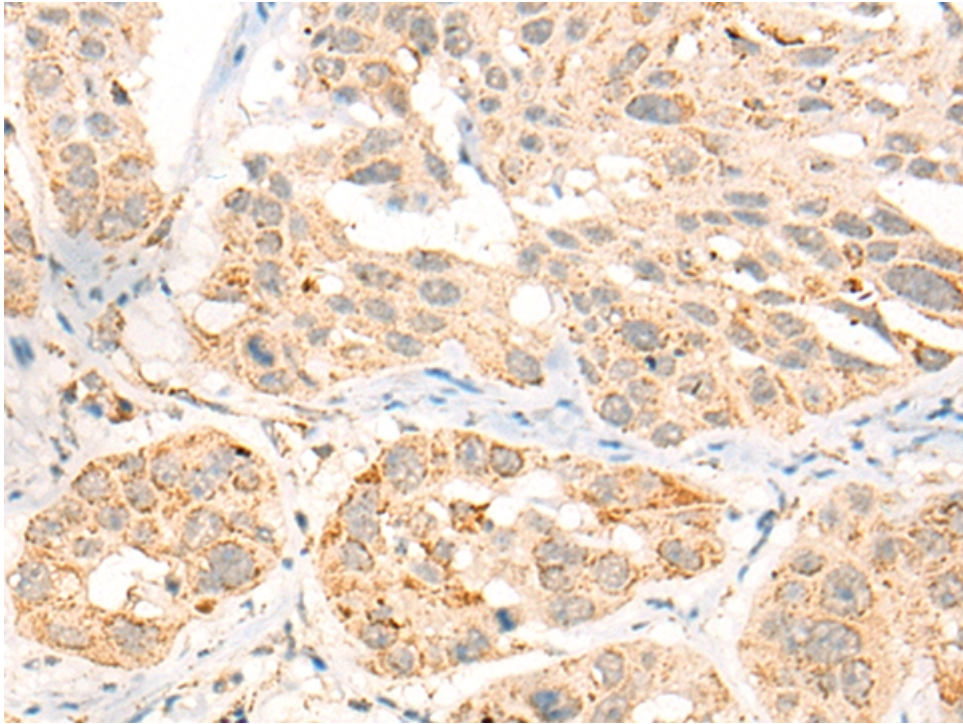


兔抗 CCT8L2 多克隆抗体

- 中文名称：兔抗 CCT8L2 多克隆抗体
- 英文名称：Anti-CCT8L2 rabbit polyclonal antibody
- 别名：chaperonin containing TCP1 subunit 8 like 2; CESK1
- 相关类别：一抗
- 储存：冷冻（-20℃）
- 宿主：Rabbit
- 抗原：CCT8L2
- 反应种属：Human
- 标记物：Unconjugate
- 克隆类型：rabbit polyclonal

技术规格

| | |
|------------------------------------|--|
| Background: | Possible molecular chaperone; assists the folding of proteins upon ATP hydrolysis. |
| Applications: | ELISA, IHC |
| Name of antibody: | CCT8L2 |
| Immunogen: | Fusion protein of human CCT8L2 |
| Full name: | chaperonin containing TCP1 subunit 8 like 2 |
| Synonyms: | CESK1 |
| SwissProt: | Q96SF2 |
| ELISA Recommended dilution: | 5000-10000 |
| IHC positive control: | Human liver cancer and Human esophagus cancer |
| IHC Recommend dilution: | 30-150 |



mlbio 梅联生物
Good elisakit producers