

Anti-MGP antibody

Cat. No.	ml125204
Package	25 µl/100 µl/200 µl
Storage	-20°C, pH7.4 PBS, 0.05% NaN ₃ , 40% Glycerol

Product overview

Description	Anti-MGP rabbit polyclonal antibody
Applications	ELISA, IHC
Immunogen	Fusion protein of human MGP
Reactivity	Human, Mouse, Rat
Content	0.84 mg/ml
Host species	Rabbit
Ig class	Immunogen-specific rabbit IgG
Purification	Antigen affinity purification

Target information

Symbol	MGP
Full name	matrix Gla protein
Synonyms	NTI; GIG36; MGLAP
Swissprot	P08493

Target Background

This gene encodes a member of the osteocalcin/matrix Gla family of proteins. The encoded vitamin K-dependent protein is secreted by chondrocytes and vascular smooth muscle cells, and functions as a physiological inhibitor of ectopic tissue calcification. Carboxylation status of the encoded protein is associated with calcification of the vasculature in human patients with cardiovascular disease and calcification of the synovial membranes in osteoarthritis patients. Mutations in this gene cause Keutel syndrome in human patients, which is characterized by abnormal cartilage calcification, peripheral pulmonary stenosis and facial hypoplasia.

订购热线: 4008-898-798

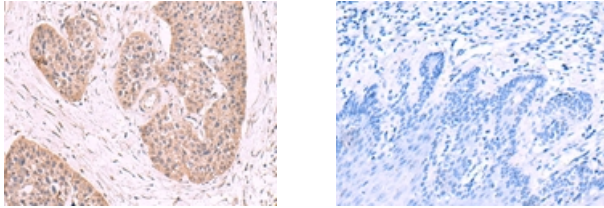
Applications

Immunohistochemistry

Predicted cell location: Cytoplasm

Positive control: Human esophagus cancer

Recommended dilution: 50-300



The image on the left is immunohistochemistry of paraffin-embedded Human esophagus cancer tissue using ml125204(MGP Antibody) at dilution 1/50, on the right is treated with fusion protein. (Original magnification: $\times 200$)

ELISA

Recommended dilution: 5000-10000

联系电话: 4008-898-798, 021-61725725

联系QQ: 2881505695, 2881505696

邮箱: mlbio_cn@yeah.net

网址: www.mlbio.cn