

Anti-UBE2A antibody

Cat. No.	ml125251
Package	25 µl/100 µl/200 µl
Storage	-20°C, pH7.4 PBS, 0.05% NaN ₃ , 40% Glycerol

Product overview

Description	Anti-UBE2A rabbit polyclonal antibody
Applications	ELISA, IHC
Immunogen	Fusion protein of human UBE2A
Reactivity	Human, Mouse
Content	0.96 mg/ml
Host species	Rabbit
Ig class	Immunogen-specific rabbit IgG
Purification	Antigen affinity purification

Target information

Symbol	UBE2A
Full name	ubiquitin conjugating enzyme E2 A
Synonyms	UBC2; HHR6A; MRXSN; RAD6A; MRXS30
Swissprot	P49459

Target Background

The modification of proteins with ubiquitin is an important cellular mechanism for targeting abnormal or short-lived proteins for degradation. Ubiquitination involves at least three classes of enzymes: ubiquitin-activating enzymes, ubiquitin-conjugating enzymes, and ubiquitin-protein ligases. This gene encodes a member of the E2 ubiquitin-conjugating enzyme family. This enzyme is required for post-replicative DNA damage repair, and may play a role in transcriptional regulation. Mutations in this gene are associated with mental retardation. Alternative splicing results in multiple transcript variants.

订购热线: 4008-898-798

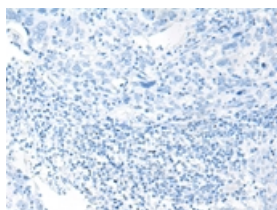
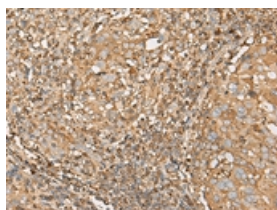
Applications

Immunohistochemistry

Predicted cell location: Cell membrane

Positive control: Human cervical cancer

Recommended dilution: 50-300

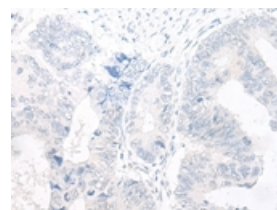
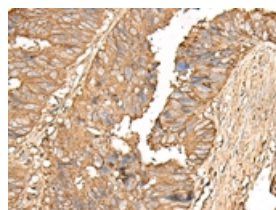


The image on the left is immunohistochemistry of paraffin-embedded Human cervical cancer tissue using ml125251(UBE2A Antibody) at dilution 1/55, on the right is treated with fusion protein. (Original magnification: $\times 200$)

Predicted cell location: Cell membrane

Positive control: Human colorectal cancer

Recommended dilution: 50-300



The image on the left is immunohistochemistry of paraffin-embedded Human colorectal cancer tissue using ml125251(UBE2A Antibody) at dilution 1/55, on the right is treated with fusion protein. (Original magnification: $\times 200$)

ELISA

Recommended dilution: 5000-10000

联系电话: 4008-898-798, 021-61725725

联系QQ: 2881505695, 2881505696

邮箱: mlbio_cn@yeah.net

网址: www.mlbio.cn