

## Anti-H3F3B antibody

<b>Cat. No.</b>	ml125570
<b>Package</b>	25 µl/100 µl/200 µl
<b>Storage</b>	-20°C, pH7.4 PBS, 0.05% NaN <sub>3</sub> , 40% Glycerol

### Product overview

<b>Description</b>	Anti-H3F3B rabbit polyclonal antibody
<b>Applications</b>	ELISA, IHC
<b>Immunogen</b>	Fusion protein of human H3F3B
<b>Reactivity</b>	Human, Mouse, Rat
<b>Content</b>	0.72 mg/ml
<b>Host species</b>	Rabbit
<b>Ig class</b>	Immunogen-specific rabbit IgG
<b>Purification</b>	Antigen affinity purification

### Target information

<b>Symbol</b>	H3F3B
<b>Full name</b>	H3 histone family member 3B
<b>Synonyms</b>	H3.3B
<b>Swissprot</b>	P84243

### Target Background

Histones are basic nuclear proteins that are responsible for the nucleosome structure of the chromosomal fiber in eukaryotes. Two molecules of each of the four core histones (H2A, H2B, H3, and H4) form an octamer, around which approximately 146 bp of DNA is wrapped in repeating units, called nucleosomes. The linker histone, H1, interacts with linker DNA between nucleosomes and functions in the compaction of chromatin into higher order structures. This gene contains introns and its mRNA is polyadenylated, unlike most histone genes. The protein encoded by this gene is a replication-independent histone that is a member of the histone H3 family. Pseudogenes of this gene have been identified on the X chromosome, and on chromosomes 5, 13 and 17.

订购热线: 4008-898-798

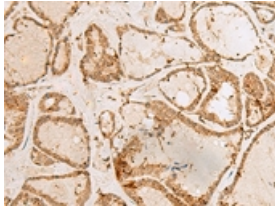
#### Applications

##### Immunohistochemistry

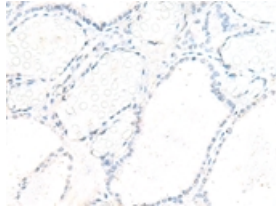
Predicted cell location: Nucleus

Positive control: Human thyroid cancer

Recommended dilution: 30-150



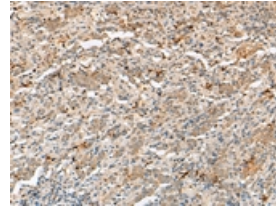
The image on the left is immunohistochemistry of paraffin-embedded Human thyroid cancer tissue using ml125570(H3F3B Antibody) at dilution 1/40, on the right is treated with fusion protein. (Original magnification:  $\times 200$ )



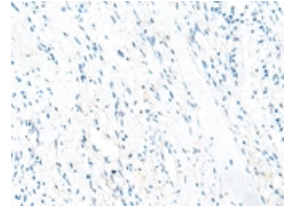
Predicted cell location: Nucleus

Positive control: Human cervical cancer

Recommended dilution: 30-150



The image on the left is immunohistochemistry of paraffin-embedded Human cervical cancer tissue using ml125570(H3F3B Antibody) at dilution 1/40, on the right is treated with fusion protein. (Original magnification:  $\times 200$ )



##### ELISA

Recommended dilution: 5000-10000

联系电话: 4008-898-798, 021-61725725

联系QQ: 2881505695, 2881505696

邮箱: [mlbio\\_cn@yeah.net](mailto:mlbio_cn@yeah.net)

网址: [www.mlbio.cn](http://www.mlbio.cn)