

Anti-RNASE4 antibody

Cat. No.	ml125583
Package	25 µl/100 µl/200 µl
Storage	-20°C, pH7.4 PBS, 0.05% NaN ₃ , 40% Glycerol

Product overview

Description	Anti-RNASE4 rabbit polyclonal antibody
Applications	ELISA, IHC
Immunogen	Fusion protein of human RNASE4
Reactivity	Human, Mouse, Rat
Content	1.26 mg/ml
Host species	Rabbit
Ig class	Immunogen-specific rabbit IgG
Purification	Antigen affinity purification

Target information

Symbol	RNASE4
Full name	ribonuclease A family member 4
Synonyms	RAB1; RNS4
Swissprot	P34096

Target Background

The protein encoded by this gene belongs to the pancreatic ribonuclease family. It plays an important role in mRNA cleavage and has marked specificity towards the 3' side of uridine nucleotides. Alternative splicing results in four transcript variants encoding the same protein. This gene and the gene that encodes angiogenin share promoters and 5' exons. Each gene splices to a unique downstream exon that contains its complete coding region.

订购热线: 4008-898-798

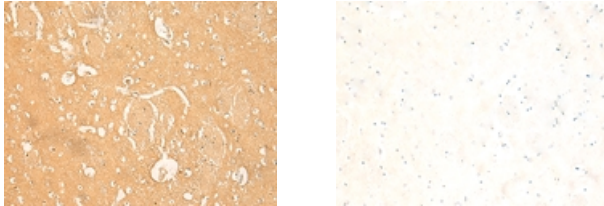
Applications

Immunohistochemistry

Predicted cell location: Secreted

Positive control: Human brain

Recommended dilution: 40-200



The image on the left is immunohistochemistry of paraffin-embedded Human brain tissue using ml125583(RNASE4 Antibody) at dilution 1/45, on the right is treated with fusion protein. (Original magnification: $\times 200$)

ELISA

Recommended dilution: 5000-10000

联系电话: 4008-898-798, 021-61725725

联系QQ: 2881505695, 2881505696

邮箱: mlbio_cn@yeah.net

网址: www.mlbio.cn