

Anti-RABEPK antibody

Cat. No.	ml125814
Package	25 µl/100 µl/200 µl
Storage	-20°C, pH7.4 PBS, 0.05% NaN ₃ , 40% Glycerol

Product overview

Description	Anti-RABEPK rabbit polyclonal antibody
Applications	ELISA, IHC
Immunogen	Fusion protein of human RABEPK
Reactivity	Human
Content	1.14 mg/ml
Host species	Rabbit
Ig class	Immunogen-specific rabbit IgG
Purification	Antigen affinity purification

Target information

Symbol	RABEPK
Full name	Rab9 effector protein with kelch motifs
Synonyms	p40; RAB9P40; bA65N13.1
Swissprot	Q7Z6M1

Target Background

Rab9 effector required for endosome to trans-Golgi network (TGN) transport.

订购热线: 4008-898-798

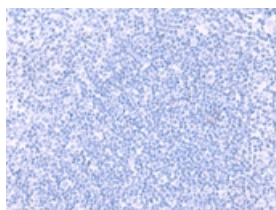
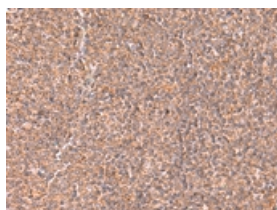
Applications

Immunohistochemistry

Predicted cell location: Cytoplasm

Positive control: Human tonsil

Recommended dilution: 50-300

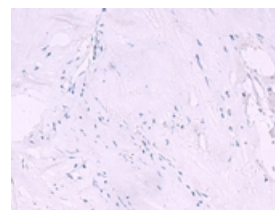
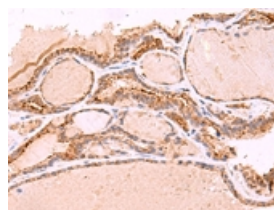


The image on the left is immunohistochemistry of paraffin-embedded Human tonsil tissue using ml125814(RABEPK Antibody) at dilution 1/65, on the right is treated with fusion protein. (Original magnification: $\times 200$)

Predicted cell location: Cytoplasm

Positive control: Human thyroid cancer

Recommended dilution: 50-300



The image on the left is immunohistochemistry of paraffin-embedded Human thyroid cancer tissue using ml125814(RABEPK Antibody) at dilution 1/65, on the right is treated with fusion protein. (Original magnification: $\times 200$)

ELISA

Recommended dilution: 5000-10000

联系电话: 4008-898-798, 021-61725725

联系QQ: 2881505695, 2881505696

邮箱: mlbio_cn@yeah.net

网址: www.mlbio.cn