

## Anti-RAB35 antibody

<b>Cat. No.</b>	ml160039
<b>Package</b>	25 µl/100 µl/200 µl
<b>Storage</b>	-20°C, pH7.4 PBS, 0.05% NaN <sub>3</sub> , 40% Glycerol

### Product overview

<b>Description</b>	Anti-RAB35 rabbit polyclonal antibody
<b>Applications</b>	ELISA, IHC
<b>Immunogen</b>	Synthetic peptide of human RAB35
<b>Reactivity</b>	Human, Mouse, Rat
<b>Content</b>	0.4 mg/ml
<b>Host species</b>	Rabbit
<b>Ig class</b>	Immunogen-specific rabbit IgG
<b>Purification</b>	Antigen affinity purification

### Target information

<b>Symbol</b>	RAB35
<b>Full name</b>	Ras-related protein Rab-35
<b>Synonyms</b>	RAY, H-ray, RAB1C
<b>Swissprot</b>	Q15286

### Target Background

This gene encodes a small GTP-binding protein that belongs to the largest family within the Ras superfamily. Rab35 plays an important role in insulin-stimulated GLUT4 translocation in adipocytes. It is the target of TBC1D10A-C and that the intracellular accumulation of endosomal vesicles and impairs exosome secretion were occurred when inhibition of Rab35 function. The surface of oligodendroglia in a GTP-dependent manner was localized Rab35, it increases the density of vesicles, and may have a function in docking or tethering.

订购热线: 4008-898-798

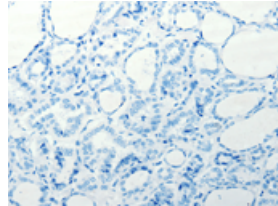
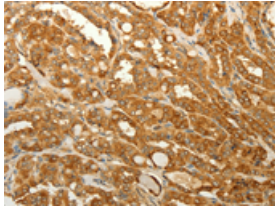
## Applications

### Immunohistochemistry

Predicted cell location: Cytoplasm

Positive control: Human thyroid cancer

Recommended dilution: 50-200

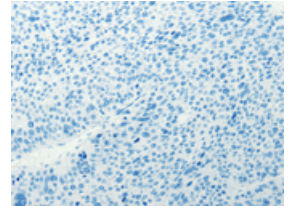
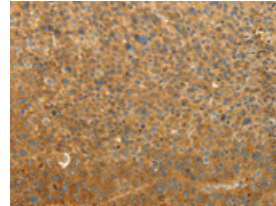


The image on the left is immunohistochemistry of paraffin-embedded Human thyroid cancer tissue using ml160039(RAB35 Antibody) at dilution 1/50, on the right is treated with synthetic peptide. (Original magnification:  $\times 200$ )

Predicted cell location: Cytoplasm

Positive control: Human liver cancer

Recommended dilution: 50-200



The image on the left is immunohistochemistry of paraffin-embedded Human liver cancer tissue using ml160039(RAB35 Antibody) at dilution 1/50, on the right is treated with synthetic peptide. (Original magnification:  $\times 200$ )

### ELISA

Recommended dilution: 1000-5000

联系电话: 4008-898-798, 021-61725725

联系QQ: 2881505695, 2881505696

邮箱: [mlbio\\_cn@yeah.net](mailto:mlbio_cn@yeah.net)

网址: [www.mlbio.cn](http://www.mlbio.cn)