

Anti-RAB39A antibody

Cat. No.	ml160041
Package	25 µl/100 µl/200 µl
Storage	-20°C, pH7.4 PBS, 0.05% NaN ₃ , 40% Glycerol

Product overview

Description	Anti-RAB39A rabbit polyclonal antibody
Applications	ELISA, IHC
Immunogen	Synthetic peptide of human RAB39
Reactivity	Human, Mouse
Content	0.2 mg/ml
Host species	Rabbit
Ig class	Immunogen-specific rabbit IgG
Purification	Antigen affinity purification

Target information

Symbol	RAB39A
Full name	RAB39A, member RAS oncogene family
Synonyms	RAB39
Swissprot	Q14964

Target Background

This gene encodes a small GTP-binding protein that belongs to the largest family within the Ras superfamily. Rab39 is a Golgi-associated protein involved in endocytosis of HeLa cells. It contains conserved motifs referred to phosphate/guanosine binding and a microbody C-terminal targeting signal. Rab39 is mostly detected in epithelial cell lines and expressed ubiquitously in human tissues. It can facilitate endocytosis in HeLa cells when expressed transiently and stably.

订购热线: 4008-898-798

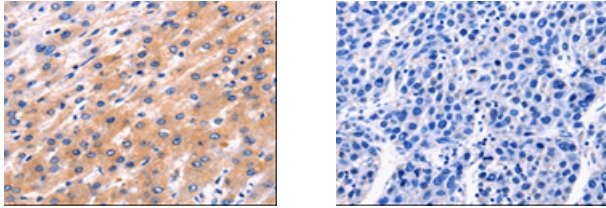
Applications

Immunohistochemistry

Predicted cell location: Cytoplasm

Positive control: Human liver cancer

Recommended dilution: 5-25



The image on the left is immunohistochemistry of paraffin-embedded Human liver cancer tissue using ml160041(RAB39A Antibody) at dilution 1/5, on the right is treated with synthetic peptide. (Original magnification: $\times 200$)

ELISA

Recommended dilution: 500-2000

联系电话: 4008-898-798, 021-61725725

联系QQ: 2881505695, 2881505696

邮箱: mlbio_cn@yeah.net

网址: www.mlbio.cn