

Anti-RAB41 antibody

Cat. No.	ml160042
Package	25 µl/100 µl/200 µl
Storage	-20°C, pH7.4 PBS, 0.05% NaN ₃ , 40% Glycerol

Product overview

Description	Anti-RAB41 rabbit polyclonal antibody
Applications	ELISA, IHC
Immunogen	Synthetic peptide of human RAB41
Reactivity	Human
Content	0.2 mg/ml
Host species	Rabbit
Ig class	Immunogen-specific rabbit IgG
Purification	Antigen affinity purification

Target information

Symbol	RAB41
Full name	Ras-related protein Rab-41
Synonyms	
Swissprot	Q5JT25

Target Background

This gene encodes a small GTP-binding protein that belongs to the largest family within the Ras superfamily. These proteins function as regulators of membrane trafficking. They cycle between inactive GDP-bound and activated GTP-bound states, which is controlled by GTP hydrolysis-activating proteins (GAPs). This family member can be activated by the GAP protein RN-Tre, and it is localized to the Golgi complex.

订购热线: 4008-898-798

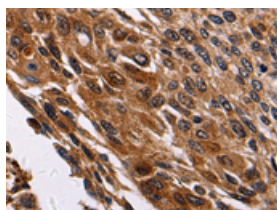
Applications

Immunohistochemistry

Predicted cell location: Cell membrane, Cytoplasm

Positive control: Human cervical cancer

Recommended dilution: 100-200

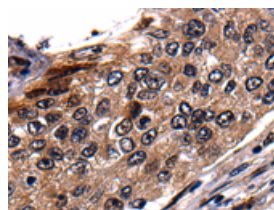


The image is immunohistochemistry of paraffin-embedded Human cervical cancer tissue using ml160042(RAB41 Antibody) at dilution 1/100. (Original magnification: ×200)

Predicted cell location: Cell membrane, Cytoplasm

Positive control: Human renal cancer

Recommended dilution: 100-200



The image is immunohistochemistry of paraffin-embedded Human renal cancer tissue using ml160042(RAB41 Antibody) at dilution 1/100. (Original magnification: ×200)

ELISA

Recommended dilution: 2000-10000

联系电话: 4008-898-798, 021-61725725

联系QQ: 2881505695, 2881505696

邮箱: mlbio_cn@yeah.net

网址: www.mlbio.cn