

Anti-Rab3D antibody

Cat. No.	ml160066
Package	25 µl/100 µl/200 µl
Storage	-20°C, pH7.4 PBS, 0.05% NaN ₃ , 40% Glycerol

Product overview

Description	Anti-Rab3D rabbit polyclonal antibody
Applications	ELISA, IHC
Immunogen	Synthetic peptide of human Rab3D
Reactivity	Human, Mouse, Rat
Content	0.4 mg/ml
Host species	Rabbit
Ig class	Immunogen-specific rabbit IgG
Purification	Antigen affinity purification

Target information

Symbol	Rab3D
Full name	RAB3D, member RAS oncogene family
Synonyms	GOV, D2-2, RAB16, RAD3D
Swissprot	O95716

Target Background

The RAB3D cDNA encodes a 24-kD protein as determined by in vitro translation. The deduced 219-amino acid sequence shows highest homology to the RAB3 subfamily of low molecular mass GTP-binding proteins. Northern blot analysis of various human hematopoietic cell lines showed a single transcript of 4.1 kb present at variable levels in each cell line, with highest expression in granulocytic lines. RAB3D was also highly expressed in YJ and HL-60 cells in response to retinoic acid treatment.

订购热线: 4008-898-798

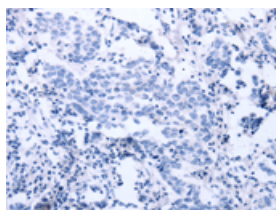
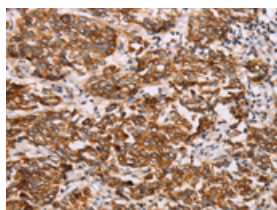
Applications

Immunohistochemistry

Predicted cell location: Cytoplasm, Cell membrane

Positive control: Human breast cancer

Recommended dilution: 25-100

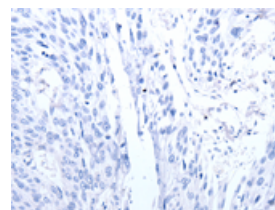
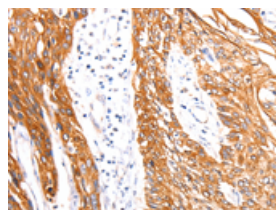


The image on the left is immunohistochemistry of paraffin-embedded Human breast cancer tissue using ml160066(Rab3D Antibody) at dilution 1/27, on the right is treated with synthetic peptide. (Original magnification: $\times 200$)

Predicted cell location: Cytoplasm, Cell membrane

Positive control: Human esophagus cancer

Recommended dilution: 25-100



The image on the left is immunohistochemistry of paraffin-embedded Human esophagus cancer tissue using ml160066(Rab3D Antibody) at dilution 1/27, on the right is treated with synthetic peptide. (Original magnification: $\times 200$)

ELISA

Recommended dilution: 1000-10000

联系电话: 4008-898-798, 021-61725725

联系QQ: 2881505695, 2881505696

邮箱: mlbio_cn@yeah.net

网址: www.mlbio.cn