

Anti-AQP2 antibody

Cat. No.	ml160098
Package	25 µl/100 µl/200 µl
Storage	-20°C, pH7.4 PBS, 0.05% NaN ₃ , 40% Glycerol

Product overview

Description	Anti-AQP2 rabbit polyclonal antibody
Applications	ELISA, IHC
Immunogen	Synthetic peptide of human AQP2
Reactivity	Human, Mouse, Rat
Content	0.7 mg/ml
Host species	Rabbit
Ig class	Immunogen-specific rabbit IgG
Purification	Antigen affinity purification

Target information

Symbol	AQP2
Full name	Aquaporin-2
Synonyms	
Swissprot	P41181

Target Background

The basic job of aquaporin 2 is to reabsorb water from the urine while its being removed from the blood by the kidney. Aquaporin 2 is in kidney epithelial cells and usually lies dormant in intracellular vesicle membranes, but when it is needed vasopressin binds to the cell surface vasopressin receptor, activating a signaling pathway that causes the aquaporin 2 containing vesicles to fuse with the plasma membrane so the aquaporin 2 can be used by the cell.

订购热线: 4008-898-798

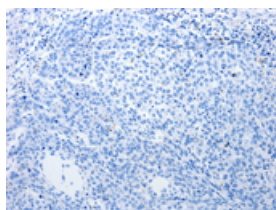
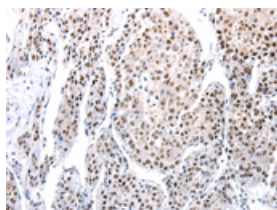
Applications

Immunohistochemistry

Predicted cell location: Cytoplasm, Nucleus

Positive control: Human liver cancer

Recommended dilution: 100-300

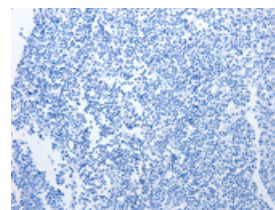
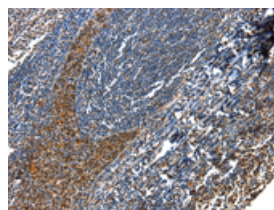


The image on the left is immunohistochemistry of paraffin-embedded Human liver cancer tissue using ml160098(AQP2 Antibody) at dilution 1/100, on the right is treated with synthetic peptide. (Original magnification: $\times 200$)

Predicted cell location: Cytoplasm, Nucleus

Positive control: Human tonsil

Recommended dilution: 100-300



The image on the left is immunohistochemistry of paraffin-embedded Human tonsil tissue using ml160098(AQP2 Antibody) at dilution 1/100, on the right is treated with synthetic peptide. (Original magnification: $\times 200$)

ELISA

Recommended dilution: 2000-10000

联系电话: 4008-898-798, 021-61725725

联系QQ: 2881505695, 2881505696

邮箱: mlbio_cn@yeah.net

网址: www.mlbio.cn