

Anti-AVEN antibody

Cat. No.	ml160111
Package	25 µl/100 µl/200 µl
Storage	-20°C, pH7.4 PBS, 0.05% NaN ₃ , 40% Glycerol

Product overview

Description	Anti-AVEN rabbit polyclonal antibody
Applications	ELISA, IHC
Immunogen	Synthetic peptide of human AVEN
Reactivity	Human, Mouse
Content	0.3 mg/ml
Host species	Rabbit
Ig class	Immunogen-specific rabbit IgG
Purification	Antigen affinity purification

Target information

Symbol	AVEN
Full name	Apoptosis, caspase activation inhibitor
Synonyms	PDCD12
Swissprot	Q9NQS1

Target Background

Aven binds to both Bcl-x(L) and the caspase regulator Apaf-1, which can supported that Bcl-x(L) inhibits cell death at a late (postmitochondrial) step in the death pathway. Identified in a yeast two-hybrid screen, Aven inhibited the proteolytic activation of caspases in a cell-free extract and suppressed apoptosis induced by Apaf-1 plus caspase-9. Expressing highly in the testis, ovary, and thymus.

订购热线: 4008-898-798

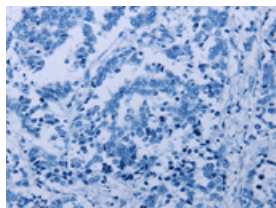
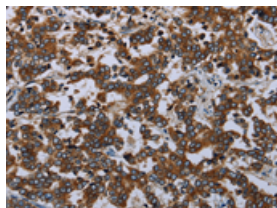
Applications

Immunohistochemistry

Predicted cell location: Cytoplasm

Positive control: Human liver cancer

Recommended dilution: 25-100

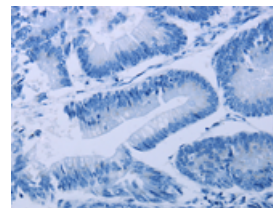
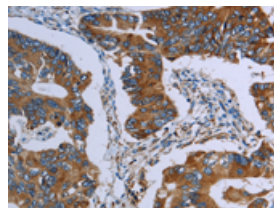


The image on the left is immunohistochemistry of paraffin-embedded Human liver cancer tissue using ml160111(AVEN Antibody) at dilution 1/20, on the right is treated with synthetic peptide. (Original magnification: $\times 200$)

Predicted cell location: Cytoplasm

Positive control: Human colon cancer

Recommended dilution: 25-100



The image on the left is immunohistochemistry of paraffin-embedded Human colon cancer tissue using ml160111(AVEN Antibody) at dilution 1/20, on the right is treated with synthetic peptide. (Original magnification: $\times 200$)

ELISA

Recommended dilution: 1000-2000

联系电话: 4008-898-798, 021-61725725

联系QQ: 2881505695, 2881505696

邮箱: mlbio_cn@yeah.net

网址: www.mlbio.cn