

Anti-POU2AF1 antibody

Cat. No.	ml160130
Package	25 µl/100 µl/200 µl
Storage	-20°C, pH7.4 PBS, 0.05% NaN ₃ , 40% Glycerol

Product overview

Description	Anti-POU2AF1 rabbit polyclonal antibody
Applications	ELISA, IHC
Immunogen	Synthetic peptide of human POU2AF1
Reactivity	Human, Mouse
Content	0.3 mg/ml
Host species	Rabbit
Ig class	Immunogen-specific rabbit IgG
Purification	Antigen affinity purification

Target information

Symbol	POU2AF1
Full name	POU class 2 associating factor 1
Synonyms	BOB1, OBF1, OCAB, OBF-1
Swissprot	Q16633

Target Background

POU domain class 2-associating factor 1 is a protein that in humans is encoded by the POU2AF1 gene. POU2AF1 has been shown to interact with POU2F1 and SIAH1. POU domain class 2-associating factor 1 is a protein that in humans is encoded by the POU2AF1 gene. Transcriptional coactivator that specifically associates with either OCT1 or OCT2. It encourages the OCT1 mediated promoter activity and to a lesser extent, that of OCT2. It has no intrinsic DNA-binding activity. It recognizes the POU domains of OCT1 and OCT2. It is necessary for the response of B-cells to antigens and required for the formation of germinal centers.

订购热线: 4008-898-798

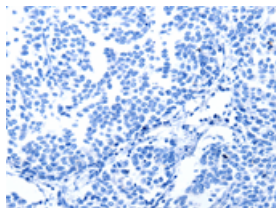
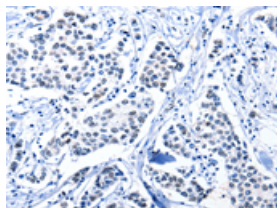
Applications

Immunohistochemistry

Predicted cell location: Nucleus

Positive control: Human breast cancer

Recommended dilution: 10-50

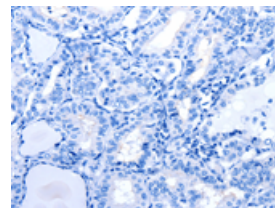
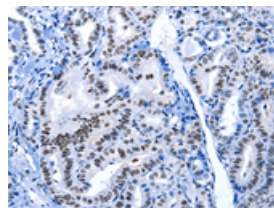


The image on the left is immunohistochemistry of paraffin-embedded Human breast cancer tissue using ml160130(POU2AF1 Antibody) at dilution 1/15, on the right is treated with synthetic peptide. (Original magnification: $\times 200$)

Predicted cell location: Nucleus

Positive control: Human thyroid cancer

Recommended dilution: 10-50



The image on the left is immunohistochemistry of paraffin-embedded Human thyroid cancer tissue using ml160130(POU2AF1 Antibody) at dilution 1/15, on the right is treated with synthetic peptide. (Original magnification: $\times 200$)

ELISA

Recommended dilution: 1000-2000

联系电话: 4008-898-798, 021-61725725

联系QQ: 2881505695, 2881505696

邮箱: mlbio_cn@yeah.net

网址: www.mlbio.cn