

## Anti-PLEKHO1 antibody

<b>Cat. No.</b>	ml160187
<b>Package</b>	25 µl/100 µl/200 µl
<b>Storage</b>	-20°C, pH7.4 PBS, 0.05% NaN <sub>3</sub> , 40% Glycerol

### Product overview

<b>Description</b>	Anti-PLEKHO1 rabbit polyclonal antibody
<b>Applications</b>	ELISA, IHC
<b>Immunogen</b>	Synthetic peptide of human PLEKHO1
<b>Reactivity</b>	Human, Mouse, Rat
<b>Content</b>	0.4 mg/ml
<b>Host species</b>	Rabbit
<b>Ig class</b>	Immunogen-specific rabbit IgG
<b>Purification</b>	Antigen affinity purification

### Target information

<b>Symbol</b>	PLEKHO1
<b>Full name</b>	pleckstrin homology domain containing, family O member 1
<b>Synonyms</b>	OC120; CKIP-1
<b>Swissprot</b>	Q53GL0

### Target Background

Pleckstrin homology domain-containing family O member 1 is a protein that in humans is encoded by the PLEKHO1 gene. PLEKHO1 has been shown to interact with Casein kinase 2, alpha 1 and SMURF1. It plays a role in the regulation of the actin cytoskeleton through its interactions with actin capping protein (CP). Appears to target ATM to the plasma membrane, and also inhibit tumor cell growth by inhibiting AKT-mediated cell-survival. The protein implicated in PI3K-regulated muscle differentiation, the regulation of AP-1 activity (plasma membrane bound AP-1 regulator that translocates to the nucleus) and the promotion of apoptosis induced by tumor necrosis factor TNF. When bound to PKB, it inhibits it probably by decreasing PKB level of phosphorylation.

订购热线: 4008-898-798

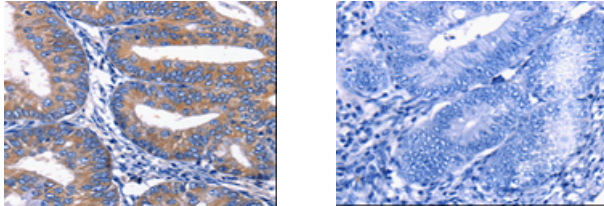
#### Applications

##### Immunohistochemistry

Predicted cell location: Cytoplasm

Positive control: Human cervical cancer

Recommended dilution: 25-100



The image on the left is immunohistochemistry of paraffin-embedded Human cervical cancer tissue using ml160187(PLEKHO1 Antibody) at dilution 1/20, on the right is treated with synthetic peptide. (Original magnification:  $\times 200$ )

##### ELISA

Recommended dilution: 1000-5000

联系电话: 4008-898-798, 021-61725725

联系QQ: 2881505695, 2881505696

邮箱: [mlbio\\_cn@yeah.net](mailto:mlbio_cn@yeah.net)

网址: [www.mlbio.cn](http://www.mlbio.cn)