

Anti-COX18 antibody

Cat. No.	ml160198
Package	25 µl/100 µl/200 µl
Storage	-20°C, pH7.4 PBS, 0.05% NaN ₃ , 40% Glycerol

Product overview

Description	Anti-COX18 rabbit polyclonal antibody
Applications	ELISA, IHC
Immunogen	Synthetic peptide of human COX18
Reactivity	Human, Mouse
Content	0.2 mg/ml
Host species	Rabbit
Ig class	Immunogen-specific rabbit IgG
Purification	Antigen affinity purification

Target information

Symbol	COX18
Full name	cytochrome c oxidase assembly homolog 18 (yeast)
Synonyms	COX18HS
Swissprot	Q8N8Q8

Target Background

COX18 encodes a cytochrome c oxidase (COX)-assembly protein. The *S. cerevisiae* Cox18 protein catalyzes the insertion of the Cox2 (MTCO2; MIM 516040) C-terminal tail into the mitochondrial inner membrane, an intermediate step in the assembly of complex IV of the mitochondrial respiratory chain. Required for the insertion of integral membrane proteins into the mitochondrial inner membrane. Essential for the activity and assembly of cytochrome c oxidase. Plays a central role in the translocation and export of the C-terminal part of the COX2 protein into the mitochondrial intermembrane space.

订购热线: 4008-898-798

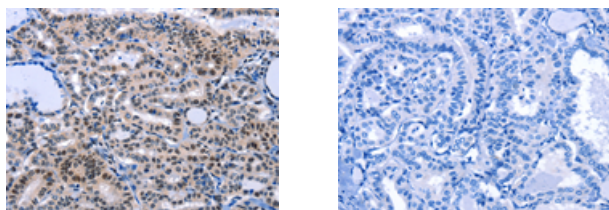
Applications

Immunohistochemistry

Predicted cell location: Cytoplasm

Positive control: Human thyroid cancer

Recommended dilution: 10-50



The image on the left is immunohistochemistry of paraffin-embedded Human thyroid cancer tissue using ml160198(COX18 Antibody) at dilution 1/7, on the right is treated with synthetic peptide. (Original magnification: $\times 200$)

ELISA

Recommended dilution: 1000-2000

联系电话: 4008-898-798, 021-61725725

联系QQ: 2881505695, 2881505696

邮箱: mlbio_cn@yeah.net

网址: www.mlbio.cn