

Anti-Gjc3 antibody

Cat. No.	ml160220
Package	25 µl/100 µl/200 µl
Storage	-20°C, pH7.4 PBS, 0.05% NaN ₃ , 40% Glycerol

Product overview

Description	Anti-Gjc3 rabbit polyclonal antibody
Applications	ELISA, IHC
Immunogen	Synthetic peptide of mouse Gjc3
Reactivity	Human, Mouse
Content	0.3 mg/ml
Host species	Rabbit
Ig class	Immunogen-specific rabbit IgG
Purification	Antigen affinity purification

Target information

Symbol	Gjc3
Full name	gap junction protein, gamma 3
Synonyms	Cx29, Gje1
Swissprot	Q921C1

Target Background

Gap junction gamma-3, also known as connexin-30.2 (Cx30.2) or connexin-31.3 (Cx31.3) or gap junction epsilon-1 (GJE1), is a protein that in humans is encoded by the GJC3 gene. GJC3 is a connexin. This gene encodes a gap junction protein. The encoded protein, also known as a connexin, plays a role in formation of gap junctions, which provide direct connections between neighboring cells. Mutations in this gene have been reported to be associated with nonsyndromic hearing loss.

订购热线: 4008-898-798

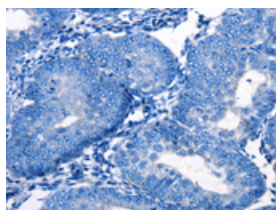
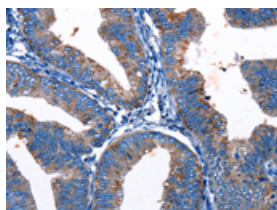
Applications

Immunohistochemistry

Predicted cell location: Cytoplasm

Positive control: Human cervical cancer

Recommended dilution: 10-50

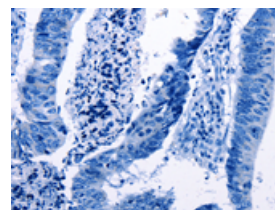
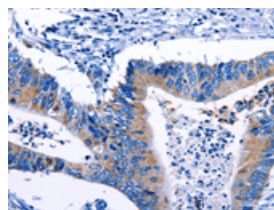


The image on the left is immunohistochemistry of paraffin-embedded Human cervical cancer tissue using ml160220(Gjc3 Antibody) at dilution 1/10, on the right is treated with synthetic peptide. (Original magnification: $\times 200$)

Predicted cell location: Cytoplasm

Positive control: Human colon cancer

Recommended dilution: 10-50



The image on the left is immunohistochemistry of paraffin-embedded Human colon cancer tissue using ml160220(Gjc3 Antibody) at dilution 1/10, on the right is treated with synthetic peptide. (Original magnification: $\times 200$)

ELISA

Recommended dilution: 1000-2000

联系电话: 4008-898-798, 021-61725725

联系QQ: 2881505695, 2881505696

邮箱: mlbio_cn@yeah.net

网址: www.mlbio.cn