

Anti-LY75 antibody

Cat. No.	ml160246
Package	25 µl/100 µl/200 µl
Storage	-20°C, pH7.4 PBS, 0.05% NaN ₃ , 40% Glycerol

Product overview

Description	Anti-LY75 rabbit polyclonal antibody
Applications	ELISA, IHC
Immunogen	Synthetic peptide of human LY75
Reactivity	Human
Content	0.2 mg/ml
Host species	Rabbit
Ig class	Immunogen-specific rabbit IgG
Purification	Antigen affinity purification

Target information

Symbol	LY75
Full name	Lymphocyte antigen 75
Synonyms	CD205, CLEC13B, DEC-205, GP200-MR6
Swissprot	O60449

Target Background

Lymphocyte antigen 75 is a protein that in humans is encoded by the LY75 gene. To direct captured antigens from the extracellular space to a specialized antigen-processing compartment as an endocytic receptor. Causes reduced proliferation of B-lymphocytes. Selection splicing results in multiple transcript variants encoding fusion products that share sequence identity with each individual gene product.

订购热线: 4008-898-798

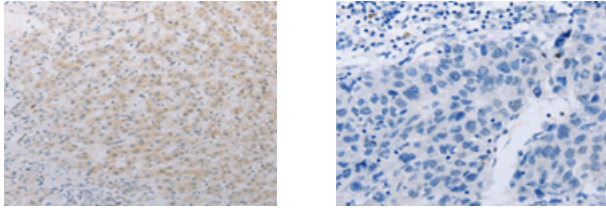
Applications

Immunohistochemistry

Predicted cell location: Cytoplasm

Positive control: Human liver cancer

Recommended dilution: 10-25



The image on the left is immunohistochemistry of paraffin-embedded Human liver cancer tissue using ml160246(LY75 Antibody) at dilution 1/25, on the right is treated with synthetic peptide. (Original magnification: $\times 200$)

ELISA

Recommended dilution: 500-5000

联系电话: 4008-898-798, 021-61725725

联系QQ: 2881505695, 2881505696

邮箱: mlbio_cn@yeah.net

网址: www.mlbio.cn