

## Anti-SLC15A2 antibody

<b>Cat. No.</b>	ml160707
<b>Package</b>	25 µl/100 µl/200 µl
<b>Storage</b>	-20°C, pH7.4 PBS, 0.05% NaN <sub>3</sub> , 40% Glycerol

### Product overview

<b>Description</b>	Anti-SLC15A2 rabbit polyclonal antibody
<b>Applications</b>	ELISA, IHC
<b>Immunogen</b>	Synthetic peptide of human SLC15A2
<b>Reactivity</b>	Human
<b>Content</b>	0.4 mg/ml
<b>Host species</b>	Rabbit
<b>Ig class</b>	Immunogen-specific rabbit IgG
<b>Purification</b>	Antigen affinity purification

### Target information

<b>Symbol</b>	SLC15A2
<b>Full name</b>	solute carrier family 15 (H <sup>+</sup> /peptide transporter), member 2
<b>Synonyms</b>	PEPT2
<b>Swissprot</b>	Q16348

### Target Background

The mammalian kidney expresses a proton-coupled peptide transporter that is responsible for the absorption of small peptides, as well as beta-lactam antibiotics and other peptide-like drugs, from the tubular filtrate. This transporter, SLC15A2, belongs to the same gene family as SLC15A1 (MIM 600544), the proton-coupled peptide transporter found in the small intestine

订购热线: 4008-898-798

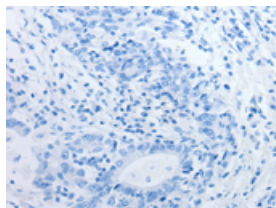
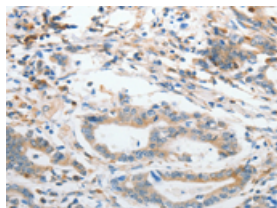
## Applications

### Immunohistochemistry

Predicted cell location: Cytoplasm

Positive control: Human gasrtic cancer

Recommended dilution: 15-50

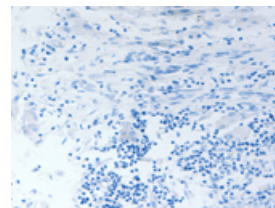
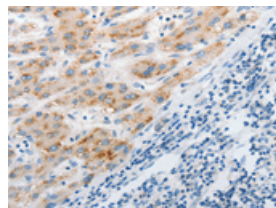


The image on the left is immunohistochemistry of paraffin-embedded Human gasrtic cancer tissue using ml160707(SLC15A2 Antibody) at dilution 1/30, on the right is treated with synthetic peptide. (Original magnification: ×200)

Predicted cell location: Cytoplasm

Positive control: Human liver cancer

Recommended dilution: 15-50



The image on the left is immunohistochemistry of paraffin-embedded Human liver cancer tissue using ml160707(SLC15A2 Antibody) at dilution 1/30, on the right is treated with synthetic peptide. (Original magnification: ×200)

### ELISA

Recommended dilution: 2000-5000

联系电话: 4008-898-798, 021-61725725

联系QQ: 2881505695, 2881505696

邮箱: [mlbio\\_cn@yeah.net](mailto:mlbio_cn@yeah.net)

网址: [www.mlbio.cn](http://www.mlbio.cn)