

Anti-NEUROG2 antibody

Cat. No.	ml161029
Package	25 µl/100 µl/200 µl
Storage	-20°C, pH7.4 PBS, 0.05% NaN ₃ , 40% Glycerol

Product overview

Description	Anti-NEUROG2 rabbit polyclonal antibody
Applications	ELISA, IHC
Immunogen	Synthetic peptide of human NEUROG2
Reactivity	Human
Content	0.3 mg/ml
Host species	Rabbit
Ig class	Immunogen-specific rabbit IgG
Purification	Antigen affinity purification

Target information

Symbol	NEUROG2
Full name	neurogenin 2
Synonyms	NGN2, Atoh4, ngn-2, Math4A, bHLHa8
Swissprot	Q9H2A3

Target Background

This gene encodes a neural-specific basic helix-loop-helix (bHLH) transcription factor that can specify a neuronal fate on ectodermal cells and is expressed in neural progenitor cells within the developing central and peripheral nervous systems. The protein product of this gene also plays a role in the differentiation and survival of midbrain dopaminergic neurons.

订购热线: 4008-898-798

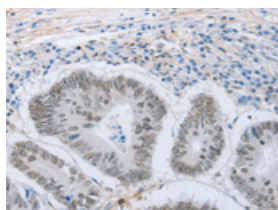
Applications

Immunohistochemistry

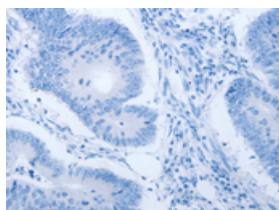
Predicted cell location: Nucleus

Positive control: Human colon cancer

Recommended dilution: 15-50



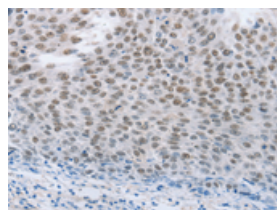
The image on the left is immunohistochemistry of paraffin-embedded Human colon cancer tissue using ml161029(NEUROG2 Antibody) at dilution 1/15, on the right is treated with synthetic peptide. (Original magnification: $\times 200$)



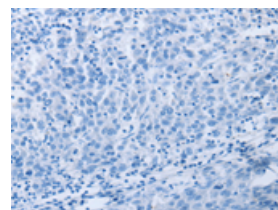
Predicted cell location: Nucleus

Positive control: Human liver cancer

Recommended dilution: 15-50



The image on the left is immunohistochemistry of paraffin-embedded Human liver cancer tissue using ml161029(NEUROG2 Antibody) at dilution 1/15, on the right is treated with synthetic peptide. (Original magnification: $\times 200$)



ELISA

Recommended dilution: 1000-2000

联系电话: 4008-898-798, 021-61725725

联系QQ: 2881505695, 2881505696

邮箱: mlbio_cn@yeah.net

网址: www.mlbio.cn