

Anti-TGFBR1 antibody

Cat. No.	ml161171
Package	25 µl/100 µl/200 µl
Storage	-20°C, pH7.4 PBS, 0.05% NaN ₃ , 40% Glycerol

Product overview

Description	Anti-TGFBR1 rabbit polyclonal antibody
Applications	ELISA, IHC
Immunogen	Synthetic peptide of human TGFBR1
Reactivity	Human, Mouse, Rat
Content	0.3 mg/ml
Host species	Rabbit
Ig class	Immunogen-specific rabbit IgG
Purification	Antigen affinity purification

Target information

Symbol	TGFBR1
Full name	transforming growth factor, beta receptor 1
Synonyms	AAT5; ALK5; MSSE; SKR4; ALK-5; LDS1A; LDS2A; TGFR-1; ACVRLK4
Swissprot	P36897

Target Background

The protein encoded by this gene forms a heteromeric complex with type II TGF-beta receptors when bound to TGF-beta, transducing the TGF-beta signal from the cell surface to the cytoplasm. The encoded protein is a serine/threonine protein kinase. Mutations in this gene have been associated with Loeys-Dietz aortic aneurysm syndrome (LDAS). Multiple transcript variants encoding different isoforms have been found for this gene.

订购热线: 4008-898-798

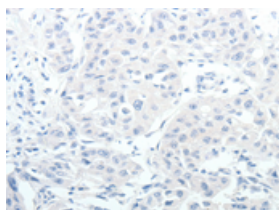
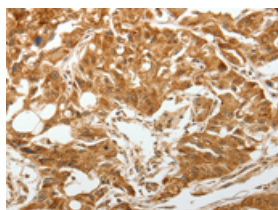
Applications

Immunohistochemistry

Predicted cell location: Cytoplasm

Positive control: Human lung cancer

Recommended dilution: 50-200

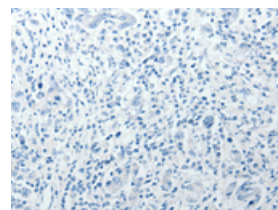
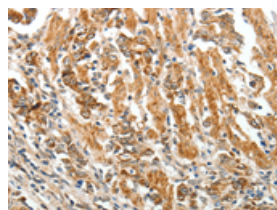


The image on the left is immunohistochemistry of paraffin-embedded Human lung cancer tissue using ml161171(TGFB1 Antibody) at dilution 1/60, on the right is treated with synthetic peptide. (Original magnification: $\times 200$)

Predicted cell location: Cytoplasm

Positive control: Human gastric cancer

Recommended dilution: 50-200



The image on the left is immunohistochemistry of paraffin-embedded Human gastric cancer tissue using ml161171(TGFB1 Antibody) at dilution 1/60, on the right is treated with synthetic peptide. (Original magnification: $\times 200$)

ELISA

Recommended dilution: 3000-10000

联系电话: 4008-898-798, 021-61725725

联系QQ: 2881505695, 2881505696

邮箱: mlbio_cn@yeah.net

网址: www.mlbio.cn