

Anti-Ly6a antibody

Cat. No.	ml161191
Package	25 µl/100 µl/200 µl
Storage	-20°C, pH7.4 PBS, 0.05% NaN ₃ , 40% Glycerol

Product overview

Description	Anti-Ly6a rabbit polyclonal antibody
Applications	ELISA, IHC
Immunogen	Synthetic peptide of mouse Ly6a
Reactivity	Human, Mouse
Content	0.7 mg/ml
Host species	Rabbit
Ig class	Immunogen-specific rabbit IgG
Purification	Antigen affinity purification

Target information

Symbol	Ly6a
Full name	lymphocyte antigen 6 complex, locus A
Synonyms	TAP; Sca1; Sca-1; Ly-6A.2; Ly-6A/E; Ly-6E.1
Swissprot	P05533

Target Background

The activity of natural killer (NK) cells is regulated by members of multiple receptor families that recognize class I MHC molecules, such as the killer cell inhibitory receptor/leukocyte immunoglobulin-like receptor (KIR/LIR) family and the C-type lectin superfamily. The Ly-6 alloantigens represent a family of phosphatidylinositol anchored proteins that play a role in the process of T lymphocyte activation. Ly-6 expression is commonly induced on T and B lymphocytes after activation by mitogens. Ly-6A/E is a phosphatidylinositol-linked transmembrane member of the Ly-6 family that is produced in humans after 4 weeks of age. ©-interferon and TNF regulate Ly-6A/E at the level of transcription and mRNA stabilization in certain thymocytes and T-cells.

订购热线: 4008-898-798

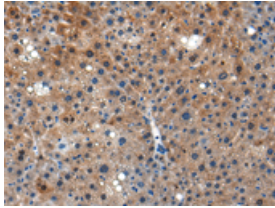
Applications

Immunohistochemistry

Predicted cell location: Cell membrane

Positive control: Mouse liver

Recommended dilution: 20-100



The image is immunohistochemistry of paraffin-embedded Mouse liver tissue using ml161191(Ly6a Antibody) at dilution 1/25. (Original magnification: $\times 200$)

ELISA

Recommended dilution: 5000-10000

联系电话: 4008-898-798, 021-61725725

联系QQ: 2881505695, 2881505696

邮箱: mlbio_cn@yeah.net

网址: www.mlbio.cn