

Anti-LPAR3 antibody

Cat. No.	ml161200
Package	25 µl/100 µl/200 µl
Storage	-20°C, pH7.4 PBS, 0.05% NaN ₃ , 40% Glycerol

Product overview

Description	Anti-LPAR3 rabbit polyclonal antibody
Applications	ELISA, IHC
Immunogen	Synthetic peptide of human LPAR3
Reactivity	Human, Mouse, Rat
Content	0.1 mg/ml
Host species	Rabbit
Ig class	Immunogen-specific rabbit IgG
Purification	Antigen affinity purification

Target information

Symbol	LPAR3
Full name	lysophosphatidic acid receptor 3
Synonyms	EDG7; GPCR; LPA3; Edg-7; LP-A3; HOFNH30; RP4-678I3
Swissprot	Q9UBY5

Target Background

This gene encodes a member of the G protein-coupled receptor family, as well as the EDG family of proteins. This protein functions as a cellular receptor for lysophosphatidic acid and mediates lysophosphatidic acid-evoked calcium mobilization. This receptor couples predominantly to G(q/11) alpha proteins.

订购热线: 4008-898-798

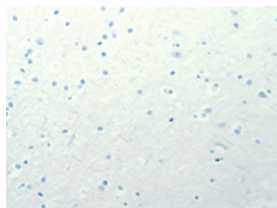
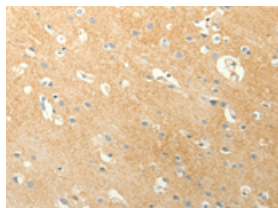
Applications

Immunohistochemistry

Predicted cell location: Cytoplasm

Positive control: Human brain

Recommended dilution: 15-50

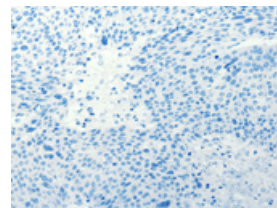
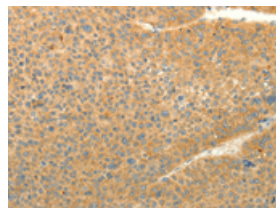


The image on the left is immunohistochemistry of paraffin-embedded Human brain tissue using ml161200(LPAR3 Antibody) at dilution 1/10, on the right is treated with synthetic peptide. (Original magnification: $\times 200$)

Predicted cell location: Cytoplasm

Positive control: Human liver cancer

Recommended dilution: 15-50



The image on the left is immunohistochemistry of paraffin-embedded Human liver cancer tissue using ml161200(LPAR3 Antibody) at dilution 1/10, on the right is treated with synthetic peptide. (Original magnification: $\times 200$)

ELISA

Recommended dilution: 1000-2000

联系电话: 4008-898-798, 021-61725725

联系QQ: 2881505695, 2881505696

邮箱: mlbio_cn@yeah.net

网址: www.mlbio.cn