

Anti-CDK12 antibody

Cat. No.	ml161586
Package	25 µl/100 µl/200 µl
Storage	-20°C, pH7.4 PBS, 0.05% NaN ₃ , 40% Glycerol

Product overview

Description	Anti-CDK12 rabbit polyclonal antibody
Applications	ELISA, IHC
Immunogen	Synthetic peptide of human CDK12
Reactivity	Human, Mouse, Rat
Content	0.5 mg/ml
Host species	Rabbit
Ig class	Immunogen-specific rabbit IgG
Purification	Antigen affinity purification

Target information

Symbol	CDK12
Full name	cyclin-dependent kinase 12
Synonyms	CRK7; CRKR; CRKRS; hCDK12
Swissprot	Q9NYV4

Target Background

CrkRS (Cdc2-related kinase, arginine/serine-rich, also designated CRK7 and CRKR) is an ubiquitous protein that appears to localize to the nucleus and link transcription and splicing machinery. CrkRS belongs to the serine/threonine protein kinase family and Cdc2/Cdkx subfamily. CrkRS has extensive proline-rich regions that resemble SH3 and WW domain binding sites, and an RS domain that is characteristic of splicing factors. The protein kinase domain of CrkRS is 89% identical to the CHED protein kinase, also designated CDC2L5 and cell division cycle 2-like 5 (cholinesterase-related cell division controller), however outside the kinase domains the two proteins are unique. Cell cycle control kinases can phosphorylate proteins important for differentiation and apoptosis and provide connections between proliferation, differentiation, apoptosis, and neurocytoskeleton dynamics.

订购热线: 4008-898-798

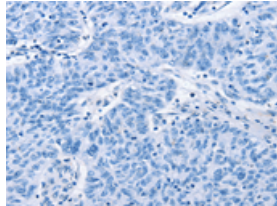
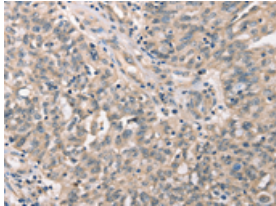
Applications

Immunohistochemistry

Predicted cell location: Cytoplasm and Nucleus

Positive control: Human ovarian cancer

Recommended dilution: 25-100

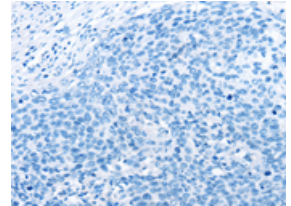
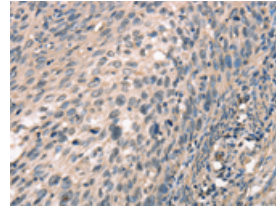


The image on the left is immunohistochemistry of paraffin-embedded Human ovarian cancer tissue using ml161586(CDK12 Antibody) at dilution 1/30, on the right is treated with synthetic peptide. (Original magnification: $\times 200$)

Predicted cell location: Cytoplasm and Nucleus

Positive control: Human cervical cancer

Recommended dilution: 25-100



The image on the left is immunohistochemistry of paraffin-embedded Human cervical cancer tissue using ml161586(CDK12 Antibody) at dilution 1/30, on the right is treated with synthetic peptide. (Original magnification: $\times 200$)

ELISA

Recommended dilution: 1000-2000

联系电话: 4008-898-798, 021-61725725

联系QQ: 2881505695, 2881505696

邮箱: mlbio_cn@yeah.net

网址: www.mlbio.cn