

Anti-MRGPRX1 antibody

Cat. No.	ml161921
Package	25 µl/100 µl/200 µl
Storage	-20°C, pH7.4 PBS, 0.05% NaN ₃ , 40% Glycerol

Product overview

Description	Anti-MRGPRX1 rabbit polyclonal antibody
Applications	ELISA, IHC
Immunogen	Synthetic peptide of human MRGPRX1
Reactivity	Human
Content	0.5 mg/ml
Host species	Rabbit
Ig class	Immunogen-specific rabbit IgG
Purification	Antigen affinity purification

Target information

Symbol	MRGPRX1
Full name	MAS-related GPR, member X1
Synonyms	GPCR; MGRG2; MRGX1; SNSR4
Swissprot	Q96LB2

Target Background

MRGX1 is an opiod receptor that has been reported exclusively in dorsal root ganglion. MRGX1 is probably involved in the function of nociceptive neurons and may regulate nociceptor function and/or development, including the sensation or modulation of pain. It is potently activated by enkephalins including BAM22 (bovine adrenal medulla peptide 22) and BAM (8-22). BAM22 is the most potent compound and evoked a large and dose-dependent release of intracellular calcium in stably transfected cells.

订购热线: 4008-898-798

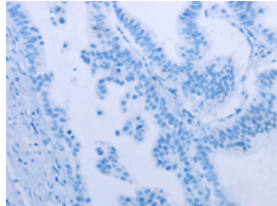
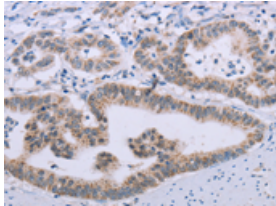
Applications

Immunohistochemistry

Predicted cell location: Cytoplasm

Positive control: Human gasrtic cancer

Recommended dilution: 25-100

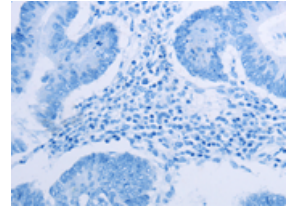
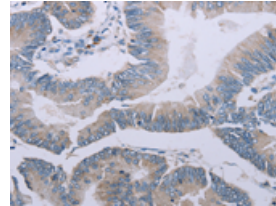


The image on the left is immunohistochemistry of paraffin-embedded Human gasrtic cancer tissue using ml161921(MRGPRX1 Antibody) at dilution 1/20, on the right is treated with synthetic peptide. (Original magnification: ×200)

Predicted cell location: Cytoplasm

Positive control: Human colon cancer

Recommended dilution: 25-100



The image on the left is immunohistochemistry of paraffin-embedded Human colon cancer tissue using ml161921(MRGPRX1 Antibody) at dilution 1/20, on the right is treated with synthetic peptide. (Original magnification: ×200)

ELISA

Recommended dilution: 1000-2000

联系电话: 4008-898-798, 021-61725725

联系QQ: 2881505695, 2881505696

邮箱: mlbio_cn@yeah.net

网址: www.mlbio.cn