

## Anti-NCKAP1 antibody

<b>Cat. No.</b>	ml161939
<b>Package</b>	25 µl/100 µl/200 µl
<b>Storage</b>	-20°C, pH7.4 PBS, 0.05% NaN <sub>3</sub> , 40% Glycerol

### Product overview

<b>Description</b>	Anti-NCKAP1 rabbit polyclonal antibody
<b>Applications</b>	ELISA, IHC
<b>Immunogen</b>	Synthetic peptide of human NCKAP1
<b>Reactivity</b>	Human, Mouse, Rat
<b>Content</b>	0.6 mg/ml
<b>Host species</b>	Rabbit
<b>Ig class</b>	Immunogen-specific rabbit IgG
<b>Purification</b>	Antigen affinity purification

### Target information

<b>Symbol</b>	NCKAP1
<b>Full name</b>	NCK-associated protein 1
<b>Synonyms</b>	HEM2; NAP1; NAP125; p125Nap1
<b>Swissprot</b>	Q9Y2A7

### Target Background

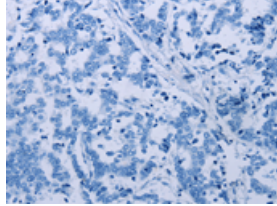
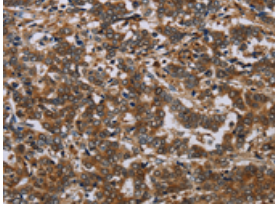
NAP125, also known as NCKAP1 (NCK-associated protein 1), p125Nap1 or membrane-associated protein HEM-2, is a 1,128 amino acid single pass membrane protein that exists as two alternatively spliced isoforms and belongs to the HEM-1/HEM-2 family. While widely expressed, NAP125 is found at highest levels in heart, brain and skeletal muscle where it regulates Rac-dependent actin remodeling as part of a lamellipodial complex with WAVE2, Abi-1 and CYFIP1. NAP125 localizes to the cytoplasmic side of lamellipodium membrane and is encoded by a gene that maps to human chromosome 2q32.1 and mouse chromosome 2 C3. NAP125 expression is markedly reduced in Alzheimer disease (AD)-affected brains, suggesting a possible role in the disease.

订购热线: 4008-898-798

### Applications

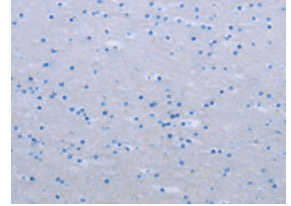
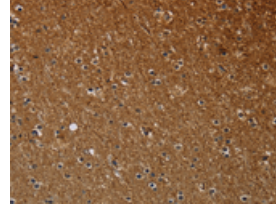
#### Immunohistochemistry

Predicted cell location: Cytoplasm  
Positive control: Human liver cancer  
Recommended dilution: 25-100



The image on the left is immunohistochemistry of paraffin-embedded Human liver cancer tissue using ml161939(NCKAP1 Antibody) at dilution 1/30, on the right is treated with synthetic peptide. (Original magnification:  $\times 200$ )

Predicted cell location: Cytoplasm  
Positive control: Human brain  
Recommended dilution: 25-100



The image on the left is immunohistochemistry of paraffin-embedded Human brain tissue using ml161939(NCKAP1 Antibody) at dilution 1/30, on the right is treated with synthetic peptide. (Original magnification:  $\times 200$ )

#### ELISA

Recommended dilution: 1000-2000

联系电话: 4008-898-798, 021-61725725

联系QQ: 2881505695, 2881505696

邮箱: [mlbio\\_cn@yeah.net](mailto:mlbio_cn@yeah.net)

网址: [www.mlbio.cn](http://www.mlbio.cn)