

## Anti-NOS2 antibody

|                 |   |
|-----------------|---|
| <b>Cat. No.</b> | ml162121  |
| <b>Package</b>  | 25 µl/100 µl/200 µl                                     |
| <b>Storage</b>  | -20°C, pH7.4 PBS, 0.05% NaN <sub>3</sub> , 40% Glycerol |

### Product overview

|                     |                                      |
|---------------------|--------------------------------------|
| <b>Description</b>  | Anti-NOS2 rabbit polyclonal antibody |
| <b>Applications</b> | ELISA, IHC                           |
| <b>Immunogen</b>    | Synthetic peptide of human NOS2      |
| <b>Reactivity</b>   | Human                                |
| <b>Content</b>      | 0.4 mg/ml                            |
| <b>Host species</b> | Rabbit                               |
| <b>Ig class</b>     | Immunogen-specific rabbit IgG        |
| <b>Purification</b> | Antigen affinity purification        |

### Target information

|                  |                                    |
|------------------|------------------------------------|
| <b>Symbol</b>    | NOS2                               |
| <b>Full name</b> | nitric oxide synthase 2, inducible |
| <b>Synonyms</b>  | NOS; INOS; NOS2A; HEP-NOS          |
| <b>Swissprot</b> | P35228                             |

### Target Background

Nitric oxide is a reactive free radical which acts as a biologic mediator in several processes, including neurotransmission and antimicrobial and antitumoral activities. This gene encodes a nitric oxide synthase which is expressed in liver and is inducible by a combination of lipopolysaccharide and certain cytokines. Three related pseudogenes are located within the Smith-Magenis syndrome region on chromosome 17.

订购热线: 4008-898-798

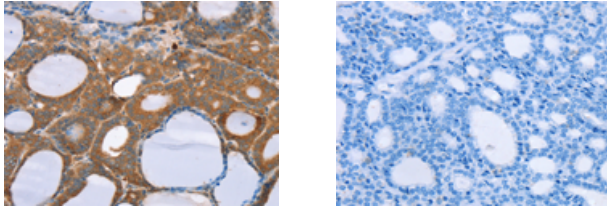
#### Applications

##### Immunohistochemistry

Predicted cell location: Cytoplasm

Positive control: Human thyroid cancer

Recommended dilution: 10-50



The image on the left is immunohistochemistry of paraffin-embedded Human thyroid cancer tissue using ml162121(NOS2 Antibody) at dilution 1/20, on the right is treated with synthetic peptide. (Original magnification:  $\times 200$ )

##### ELISA

Recommended dilution: 1000-2000

联系电话: 4008-898-798, 021-61725725

联系QQ: 2881505695, 2881505696

邮箱: [mlbio\\_cn@yeah.net](mailto:mlbio_cn@yeah.net)

网址: [www.mlbio.cn](http://www.mlbio.cn)