

## Anti-SLC5A10 antibody

<b>Cat. No.</b>	ml162247
<b>Package</b>	25 µl/100 µl/200 µl
<b>Storage</b>	-20°C, pH7.4 PBS, 0.05% NaN <sub>3</sub> , 40% Glycerol

### Product overview

<b>Description</b>	Anti-SLC5A10 rabbit polyclonal antibody
<b>Applications</b>	ELISA, IHC
<b>Immunogen</b>	Synthetic peptide of human SLC5A10
<b>Reactivity</b>	Human
<b>Content</b>	0.6 mg/ml
<b>Host species</b>	Rabbit
<b>Ig class</b>	Immunogen-specific rabbit IgG
<b>Purification</b>	Antigen affinity purification

### Target information

<b>Symbol</b>	SLC5A10
<b>Full name</b>	solute carrier family 5 (sodium/sugar cotransporter), member 10
<b>Synonyms</b>	SGLT5; SGLT-5
<b>Swissprot</b>	A0PJK1

### Target Background

This gene is a member of the sodium/glucose transporter family. Members of this family are sodium-dependent transporters and can be divided into two subfamilies based on sequence homology, one that co-transporters sugars and the second that transports molecules such as ascorbate, choline, iodide, lipoate, monocarboxylates, and pantothenate. The protein encoded by this gene has the highest affinity for mannose and has been reported to be most highly expressed in the kidney. This protein may function as a kidney-specific, sodium-dependent mannose and fructose co-transporter. Alternative splicing results in multiple transcript variants that encode different protein isoforms.

订购热线: 4008-898-798

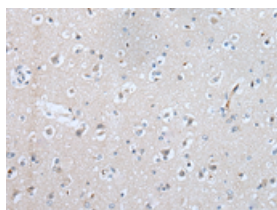
## Applications

### Immunohistochemistry

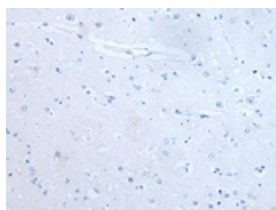
Predicted cell location: Cell membrane or Nucleus

Positive control: Human brain

Recommended dilution: 20-100



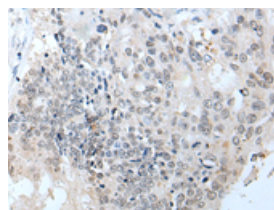
The image on the left is immunohistochemistry of paraffin-embedded Human brain tissue using ml162247(SLC5A10 Antibody) at dilution 1/30, on the right is treated with synthetic peptide. (Original magnification:  $\times 200$ )



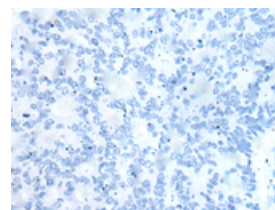
Predicted cell location: Cell membrane or Nucleus

Positive control: Human colorectal cancer

Recommended dilution: 20-100



The image on the left is immunohistochemistry of paraffin-embedded Human colorectal cancer tissue using ml162247(SLC5A10 Antibody) at dilution 1/30, on the right is treated with synthetic peptide. (Original magnification:  $\times 200$ )



### ELISA

Recommended dilution: 5000-10000

联系电话: 4008-898-798, 021-61725725

联系QQ: 2881505695, 2881505696

邮箱: [mlbio\\_cn@yeah.net](mailto:mlbio_cn@yeah.net)

网址: [www.mlbio.cn](http://www.mlbio.cn)