

Anti-WDR45B antibody

Cat. No.	ml162493
Package	25 µl/100 µl/200 µl
Storage	-20°C, pH7.4 PBS, 0.05% NaN ₃ , 40% Glycerol

Product overview

Description	Anti-WDR45B rabbit polyclonal antibody
Applications	ELISA, IHC
Immunogen	Synthetic peptide of human WDR45B
Reactivity	Human, Mouse
Content	0.7 mg/ml
Host species	Rabbit
Ig class	Immunogen-specific rabbit IgG
Purification	Antigen affinity purification

Target information

Symbol	WDR45B
Full name	WD repeat domain 45B
Synonyms	WIPI3; WDR45L; WIPI-3
Swissprot	Q5MNZ6

Target Background

This gene encodes a member of the WIPI or SVP1 family of WD40 repeat-containing proteins. The protein contains seven WD40 repeats that are thought to fold into a beta-propeller structure that mediates protein-protein interactions, and a conserved motif for interaction with phospholipids. The human genome contains several pseudogenes of this gene.

订购热线: 4008-898-798

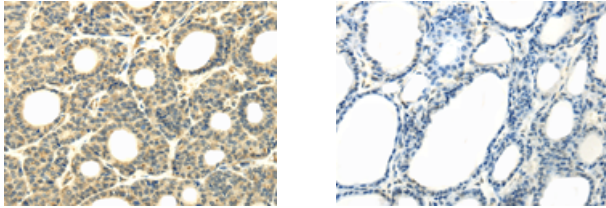
Applications

Immunohistochemistry

Predicted cell location: Cytoplasm

Positive control: Human thyroid cancer

Recommended dilution: 30-150



The image on the left is immunohistochemistry of paraffin-embedded Human thyroid cancer tissue using ml162493(WDR45B Antibody) at dilution 1/40, on the right is treated with synthetic peptide. (Original magnification: $\times 200$)

ELISA

Recommended dilution: 2000-10000

联系电话: 4008-898-798, 021-61725725

联系QQ: 2881505695, 2881505696

邮箱: mlbio_cn@yeah.net

网址: www.mlbio.cn