

Anti-CNTN1 antibody

Cat. No.	ml163130
Package	25 µl/100 µl/200 µl
Storage	-20°C, pH7.4 PBS, 0.05% NaN ₃ , 40% Glycerol

Product overview

Description	Anti-CNTN1 rabbit polyclonal antibody
Applications	ELISA, WB, IHC
Immunogen	Synthetic peptide of human CNTN1
Reactivity	Human, Mouse, Rat
Content	1.3 mg/ml
Host species	Rabbit
Ig class	Immunogen-specific rabbit IgG
Purification	Antigen affinity purification

Target information

Symbol	CNTN1
Full name	contactin 1
Synonyms	F3; GP135; MYPCN
Swissprot	Q12860

Target Background

The protein encoded by this gene is a member of the immunoglobulin superfamily. It is a glycosylphosphatidylinositol (GPI)-anchored neuronal membrane protein that functions as a cell adhesion molecule. It may play a role in the formation of axon connections in the developing nervous system. Multiple alternatively spliced transcript variants encoding different isoforms have been found for this gene.

订购热线: 4008-898-798

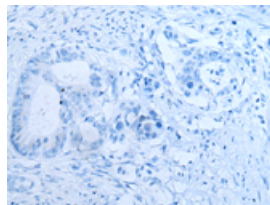
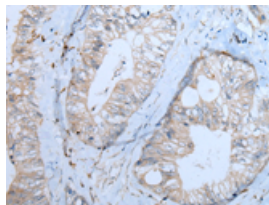
Applications

Immunohistochemistry

Predicted cell location: Cell membrane

Positive control: Human colorectal cancer

Recommended dilution: 35-200

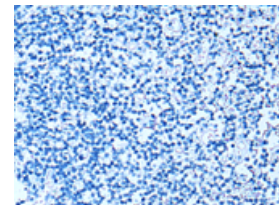
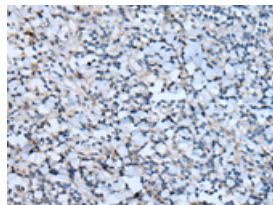


The image on the left is immunohistochemistry of paraffin-embedded Human colorectal cancer tissue using ml163130(CNTN1 Antibody) at dilution 1/55, on the right is treated with synthetic peptide. (Original magnification: $\times 200$)

Predicted cell location: Cell membrane

Positive control: Human tonsil

Recommended dilution: 35-200



The image on the left is immunohistochemistry of paraffin-embedded Human tonsil tissue using ml163130(CNTN1 Antibody) at dilution 1/55, on the right is treated with synthetic peptide. (Original magnification: $\times 200$)

Western blotting

Predicted band size: 113 kDa

Positive control: Rat brain tissue, Mouse brain tissue, Human fetal brain tissue, Human cerebrum tissue, Human cerebella tissue lysates

Recommended dilution: 500-2000

Gel: 6%SDS-PAGE

Lysate: 40 μ g

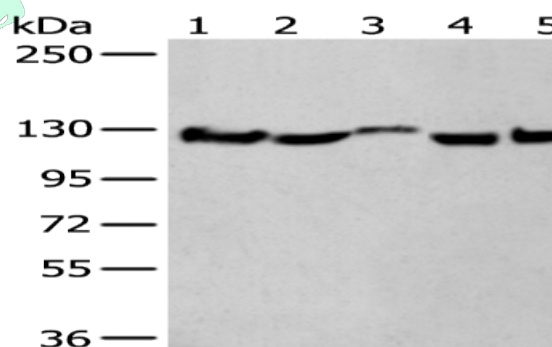
Lane 1-5: Rat brain tissue, Mouse brain tissue, Human fetal brain tissue,

Human cerebrum tissue, Human cerebella tissue lysates

Primary antibody: ml163130(CNTN1 Antibody) at dilution 1/550

Secondary antibody: Goat anti rabbit IgG at 1/8000 dilution

Exposure time: 10 seconds



ELISA

Recommended dilution: 5000-10000

联系电话: 4008-898-798, 021-61725725

联系QQ: 2881505695, 2881505696

邮箱: mlbio_cn@yeah.net

网址: www.mlbio.cn