

## Anti-EEPD1 antibody

<b>Cat. No.</b>	ml163758
<b>Package</b>	25 µl/100 µl/200 µl
<b>Storage</b>	-20°C, pH7.4 PBS, 0.05% NaN <sub>3</sub> , 40% Glycerol

### Product overview

<b>Description</b>	Anti-EEPD1 rabbit polyclonal antibody
<b>Applications</b>	ELISA, WB, IHC
<b>Immunogen</b>	Synthetic peptide of human EEPD1
<b>Reactivity</b>	Human, Mouse
<b>Content</b>	0.72 mg/ml
<b>Host species</b>	Rabbit
<b>Ig class</b>	Immunogen-specific rabbit IgG
<b>Purification</b>	Antigen affinity purification

### Target information

<b>Symbol</b>	EEPD1
<b>Full name</b>	endonuclease/exonuclease/phosphatase family domain containing 1
<b>Synonyms</b>	HSPC107
<b>Swissprot</b>	Q7L9B9

### Target Background

EEPD1(endonuclease/exonuclease/phosphatase family domain containing 1), also known as HSPC107, is a 569 amino acid protein that contains one HhH domain. A significant decrease in the relative transcriptional level of EEPD1 is induced by long-term heat stress exposure. Conversely, EEPD1 is up-regulated in bovine adipogenic processes related to intramuscular pre-adipocyte differentiation. Encoded by a gene that maps to human chromosome 7p14.2, EEPD1 plays a role in DNA binding and repair. Chromosome 7 makes up about 5% of the human genome and contains 158 million bases encoding more than 1,000 genes. Osteogenesis imperfecta, Pendred syndrome, Lissencephaly, Citrullinemia and Shwachman-Diamond syndrome are associated with Chromosome 7.

订购热线: 4008-898-798

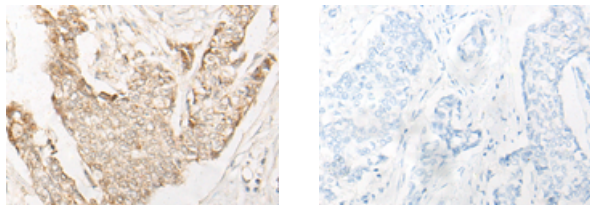
## Applications

### Immunohistochemistry

Predicted cell location: Nucleus

Positive control: Human breast cancer

Recommended dilution: 20-100



The image on the left is immunohistochemistry of paraffin-embedded Human breast cancer tissue using ml163758(EEPD1 Antibody) at dilution 1/20, on the right is treated with synthetic peptide. (Original magnification:  $\times 200$ )

### Western blotting

Predicted band size: 63 kDa

Positive control: PC-3 cell, Human cerebrum tissue, 231 cell lysates

Recommended dilution: 200-1000

Gel: 8%SDS-PAGE

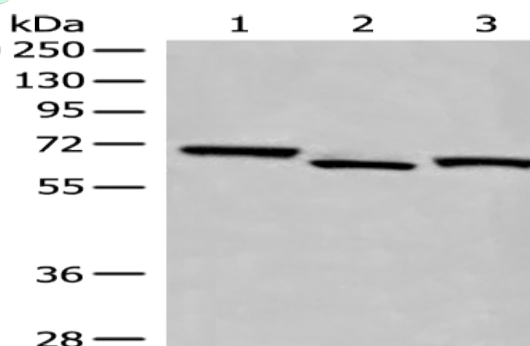
Lysate: 40  $\mu$ g

Lane 1-3: PC-3 cell, Human cerebrum tissue, 231 cell lysates

Primary antibody: ml163758(EEPD1 Antibody) at dilution 1/300

Secondary antibody: Goat anti rabbit IgG at 1/8000 dilution

Exposure time: 30 seconds



### ELISA

Recommended dilution: 5000-10000

联系电话: 4008-898-798, 021-61725725

联系QQ: 2881505695, 2881505696

邮箱: [mlbio\\_cn@yeah.net](mailto:mlbio_cn@yeah.net)

网址: [www.mlbio.cn](http://www.mlbio.cn)