

## Anti-UTP18 antibody

|                 |   |
|-----------------|---|
| <b>Cat. No.</b> | ml163247  |
| <b>Package</b>  | 25 µl/100 µl/200 µl                                     |
| <b>Storage</b>  | -20°C, pH7.4 PBS, 0.05% NaN <sub>3</sub> , 40% Glycerol |

### Product overview

|                     |                                       |
|---------------------|---------------------------------------|
| <b>Description</b>  | Anti-UTP18 rabbit polyclonal antibody |
| <b>Applications</b> | ELISA, IHC                            |
| <b>Immunogen</b>    | Synthetic peptide of human UTP18      |
| <b>Reactivity</b>   | Human, Mouse                          |
| <b>Content</b>      | 0.1 mg/ml                             |
| <b>Host species</b> | Rabbit                                |
| <b>Ig class</b>     | Immunogen-specific rabbit IgG         |
| <b>Purification</b> | Antigen affinity purification         |

### Target information

|                  |   |
|------------------|---|
| <b>Symbol</b>    | UTP18                                     |
| <b>Full name</b> | UTP18, small subunit processome component |
| <b>Synonyms</b>  | WDR50; CGI-48                             |
| <b>Swissprot</b> | Q9Y5J1                                    |

### Target Background

WD-repeats are motifs that are found in a variety of proteins and are characterized by a conserved core of 40-60 amino acids that commonly form a tertiary propeller structure. While proteins that contain WD-repeats participate in a wide range of cellular functions, they are generally involved in regulatory mechanisms concerning chromatin assembly, cell cycle control, signal transduction, RNA processing, apoptosis and vesicular trafficking. UTP18 (U3 small nucleolar RNA-associated protein 18), also known as WDR50 (WD repeat-containing protein 50), is a 556 amino acid protein that localizes to the nucleus, contains six WD repeats and is thought to be involved in the processing of pre-18S ribosomal RNA. The gene encoding UTP18 maps to human chromosome 17, which comprises over 2.5% of the human genome and encodes over 1,200 genes.

订购热线: 4008-898-798

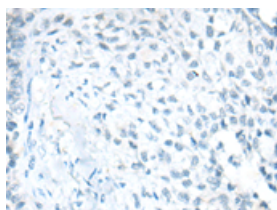
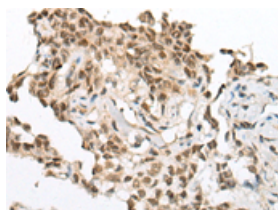
## Applications

### Immunohistochemistry

Predicted cell location: Nucleus

Positive control: Human ovarian cancer

Recommended dilution: 10-50

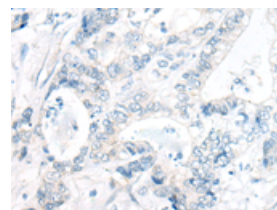
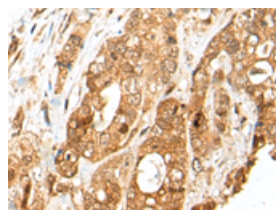


The image on the left is immunohistochemistry of paraffin-embedded Human ovarian cancer tissue using ml163247(UTP18 Antibody) at dilution 1/25, on the right is treated with synthetic peptide. (Original magnification:  $\times 200$ )

Predicted cell location: Nucleus

Positive control: Human gastric cancer

Recommended dilution: 10-50



The image on the left is immunohistochemistry of paraffin-embedded Human gastric cancer tissue using ml163247(UTP18 Antibody) at dilution 1/25, on the right is treated with synthetic peptide. (Original magnification:  $\times 200$ )

### ELISA

Recommended dilution: 5000-10000

联系电话: 4008-898-798, 021-61725725

联系QQ: 2881505695, 2881505696

邮箱: [mlbio\\_cn@yeah.net](mailto:mlbio_cn@yeah.net)

网址: [www.mlbio.cn](http://www.mlbio.cn)