

## Anti-CALML6 antibody

<b>Cat. No.</b>	ml163367
<b>Package</b>	25 µl/100 µl/200 µl
<b>Storage</b>	-20°C, pH7.4 PBS, 0.05% NaN <sub>3</sub> , 40% Glycerol

### Product overview

<b>Description</b>	Anti-CALML6 rabbit polyclonal antibody
<b>Applications</b>	ELISA, IHC
<b>Immunogen</b>	Synthetic peptide of human CALML6
<b>Reactivity</b>	Human
<b>Content</b>	0.5 mg/ml
<b>Host species</b>	Rabbit
<b>Ig class</b>	Immunogen-specific rabbit IgG
<b>Purification</b>	Antigen affinity purification

### Target information

<b>Symbol</b>	CALML6
<b>Full name</b>	calmodulin like 6
<b>Synonyms</b>	CAGLP
<b>Swissprot</b>	Q8TD86

### Target Background

The level of intracellular calcium is tightly regulated in all eukaryotic cells. A modest increase in this level can result in a myriad of physiological responses, most of which are mediated by calmodulin (CaM), a universal calcium sensor. CaM directly modulates the activity of protein kinases and phosphatases, ion channels and nitric oxide synthetases and is generally involved in such diverse processes as cell proliferation, endocytosis, cellular adhesion, protein turnover and smooth muscle contraction. CALML6 (calmodulin-like 6), also known as CAGLP or CALGP, is a 181 amino acid protein that contains four EF-hand domains and shares functional similarity with CaM. Localized to both the nucleus and the cytoplasm, CALML6 is expressed in heart, prostate, ovary, thymus and bone marrow where it may regulate calcium-related events.

订购热线: 4008-898-798

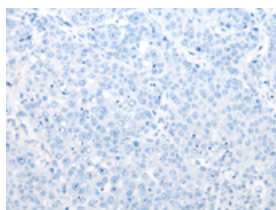
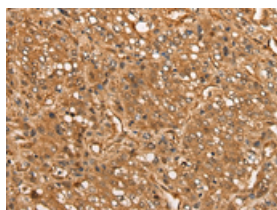
## Applications

### Immunohistochemistry

Predicted cell location: Cytoplasm or Nucleus

Positive control: Human liver cancer

Recommended dilution: 40-200

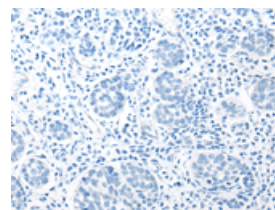
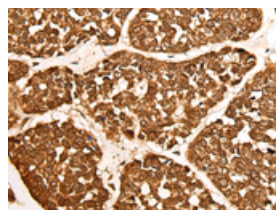


The image on the left is immunohistochemistry of paraffin-embedded Human liver cancer tissue using ml163367(CALML6 Antibody) at dilution 1/55, on the right is treated with synthetic peptide. (Original magnification: ×200)

Predicted cell location: Cytoplasm or Nucleus

Positive control: Human esophagus cancer

Recommended dilution: 40-200



The image on the left is immunohistochemistry of paraffin-embedded Human esophagus cancer tissue using ml163367(CALML6 Antibody) at dilution 1/55, on the right is treated with synthetic peptide. (Original magnification: ×200)

### ELISA

Recommended dilution: 5000-10000

联系电话: 4008-898-798, 021-61725725

联系QQ: 2881505695, 2881505696

邮箱: [mlbio\\_cn@yeah.net](mailto:mlbio_cn@yeah.net)

网址: [www.mlbio.cn](http://www.mlbio.cn)