

Anti-CD28 antibody

Cat. No.	ml163402
Package	25 µl/100 µl/200 µl
Storage	-20°C, pH7.4 PBS, 0.05% NaN ₃ , 40% Glycerol

Product overview

Description	Anti-CD28 rabbit polyclonal antibody
Applications	ELISA, IHC
Immunogen	Synthetic peptide of human CD28
Reactivity	Human
Content	0.1 mg/ml
Host species	Rabbit
Ig class	Immunogen-specific rabbit IgG
Purification	Antigen affinity purification

Target information

Symbol	CD28
Full name	CD28 molecule
Synonyms	Tp44
Swissprot	P10747

Target Background

The protein encoded by this gene is essential for T-cell proliferation and survival, cytokine production, and T-helper type-2 development. Several alternatively spliced transcript variants encoding different isoforms have been found for this gene.

订购热线: 4008-898-798

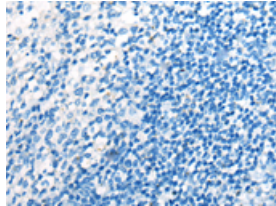
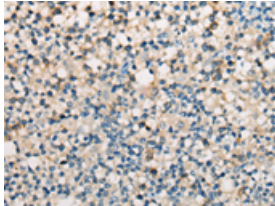
Applications

Immunohistochemistry

Predicted cell location: Cell membrane

Positive control: Human tonsil

Recommended dilution: 10-50



The image on the left is immunohistochemistry of paraffin-embedded Human tonsil tissue using ml163402(CD28 Antibody) at dilution 1/20, on the right is treated with synthetic peptide. (Original magnification: $\times 200$)

ELISA

Recommended dilution: 5000-10000

联系电话: 4008-898-798, 021-61725725

联系QQ: 2881505695, 2881505696

邮箱: mlbio_cn@yeah.net

网址: www.mlbio.cn