

## Anti-CDC14A antibody

<b>Cat. No.</b>	ml163409
<b>Package</b>	25 µl/100 µl/200 µl
<b>Storage</b>	-20°C, pH7.4 PBS, 0.05% NaN <sub>3</sub> , 40% Glycerol

### Product overview

<b>Description</b>	Anti-CDC14A rabbit polyclonal antibody
<b>Applications</b>	ELISA, IHC
<b>Immunogen</b>	Synthetic peptide of human CDC14A
<b>Reactivity</b>	Human, Mouse
<b>Content</b>	0.7 mg/ml
<b>Host species</b>	Rabbit
<b>Ig class</b>	Immunogen-specific rabbit IgG
<b>Purification</b>	Antigen affinity purification

### Target information

<b>Symbol</b>	CDC14A
<b>Full name</b>	cell division cycle 14A
<b>Synonyms</b>	cdc14; hCDC14; DFNB105
<b>Swissprot</b>	Q9UNH5

### Target Background

The protein encoded by this gene is a member of the dual specificity protein tyrosine phosphatase family. It is highly similar to *Saccharomyces cerevisiae* Cdc14, a protein tyrosine phosphatase involved in the exit of cell mitosis and initiation of DNA replication, suggesting a role in cell cycle control. This protein has been shown to interact with, and dephosphorylate tumor suppressor protein p53, and is thought to regulate the function of p53. Alternative splicing of this gene results in several transcript variants encoding distinct isoforms.

订购热线: 4008-898-798

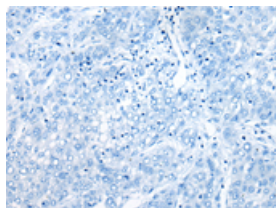
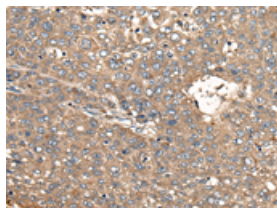
## Applications

### Immunohistochemistry

Predicted cell location: Cytoplasm or Nucleus

Positive control: Human liver cancer

Recommended dilution: 25-100

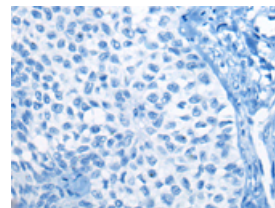
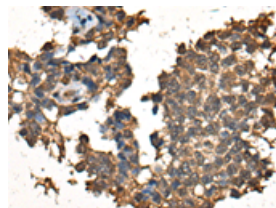


The image on the left is immunohistochemistry of paraffin-embedded Human liver cancer tissue using ml163409(CDC14A Antibody) at dilution 1/20, on the right is treated with synthetic peptide. (Original magnification:  $\times 200$ )

Predicted cell location: Cytoplasm or Nucleus

Positive control: Human ovarian cancer

Recommended dilution: 25-100



The image on the left is immunohistochemistry of paraffin-embedded Human ovarian cancer tissue using ml163409(CDC14A Antibody) at dilution 1/20, on the right is treated with synthetic peptide. (Original magnification:  $\times 200$ )

### ELISA

Recommended dilution: 5000-10000

联系电话: 4008-898-798, 021-61725725

联系QQ: 2881505695, 2881505696

邮箱: [mlbio\\_cn@yeah.net](mailto:mlbio_cn@yeah.net)

网址: [www.mlbio.cn](http://www.mlbio.cn)