

Anti-GULP1 antibody

Cat. No.	ml163425
Package	25 µl/100 µl/200 µl
Storage	-20°C, pH7.4 PBS, 0.05% NaN ₃ , 40% Glycerol

Product overview

Description	Anti-GULP1 rabbit polyclonal antibody
Applications	ELISA, IHC
Immunogen	Synthetic peptide of human GULP1
Reactivity	Human, Mouse, Rat
Content	1.3 mg/ml
Host species	Rabbit
Ig class	Immunogen-specific rabbit IgG
Purification	Antigen affinity purification

Target information

Symbol	GULP1
Full name	GULP, engulfment adaptor PTB domain containing 1
Synonyms	CED6; GULP; CED-6
Swissprot	Q9UBP9

Target Background

The protein encoded by this gene is an adapter protein necessary for the engulfment of apoptotic cells by phagocytes. Several transcript variants, some protein coding and some thought not to be protein coding, have been found for this gene.

订购热线: 4008-898-798

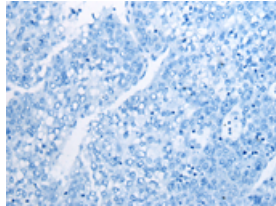
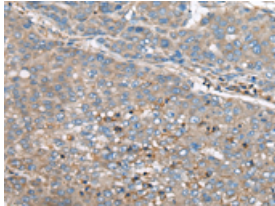
Applications

Immunohistochemistry

Predicted cell location: Cytoplasm

Positive control: Human liver cancer

Recommended dilution: 50-300

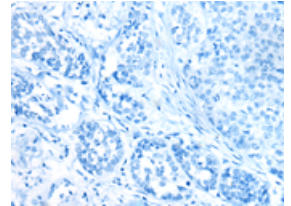
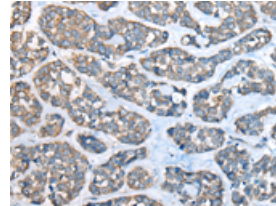


The image on the left is immunohistochemistry of paraffin-embedded Human liver cancer tissue using ml163425(GULP1 Antibody) at dilution 1/65, on the right is treated with synthetic peptide. (Original magnification: $\times 200$)

Predicted cell location: Cytoplasm

Positive control: Human esophagus cancer

Recommended dilution: 50-300



The image on the left is immunohistochemistry of paraffin-embedded Human esophagus cancer tissue using ml163425(GULP1 Antibody) at dilution 1/65, on the right is treated with synthetic peptide. (Original magnification: $\times 200$)

ELISA

Recommended dilution: 5000-10000

联系电话: 4008-898-798, 021-61725725

联系QQ: 2881505695, 2881505696

邮箱: mlbio_cn@yeah.net

网址: www.mlbio.cn