

## Anti-PIAS3 antibody

<b>Cat. No.</b>	ml163528
<b>Package</b>	25 µl/100 µl/200 µl
<b>Storage</b>	-20°C, pH7.4 PBS, 0.05% NaN <sub>3</sub> , 40% Glycerol

### Product overview

<b>Description</b>	Anti-PIAS3 rabbit polyclonal antibody
<b>Applications</b>	ELISA, IHC
<b>Immunogen</b>	Synthetic peptide of human PIAS3
<b>Reactivity</b>	Human, Mouse, Rat
<b>Content</b>	1.1 mg/ml
<b>Host species</b>	Rabbit
<b>Ig class</b>	Immunogen-specific rabbit IgG
<b>Purification</b>	Antigen affinity purification

### Target information

<b>Symbol</b>	PIAS3
<b>Full name</b>	protein inhibitor of activated STAT 3
<b>Synonyms</b>	ZMIZ5
<b>Swissprot</b>	Q9Y6X2

### Target Background

This gene encodes a member of the PIAS [protein inhibitor of activated STAT (signal transducer and activator of transcription)] family of transcriptional modulators. The protein functions as a SUMO (small ubiquitin-like modifier)-E3 ligase which catalyzes the covalent attachment of a SUMO protein to specific target substrates. It directly binds to several transcription factors and either blocks or enhances their activity. Alternatively spliced transcript variants of this gene have been identified, but the full-length nature of some of these variants has not been determined.

订购热线: 4008-898-798

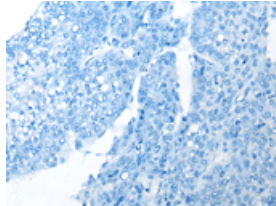
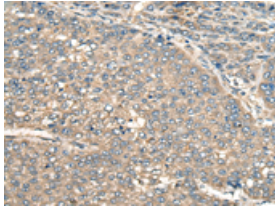
#### Applications

##### Immunohistochemistry

Predicted cell location: Cytoplasm or Nucleus

Positive control: Human liver cancer

Recommended dilution: 40-200

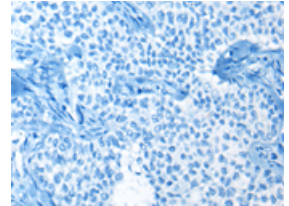
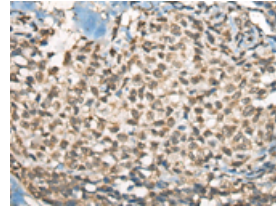


The image on the left is immunohistochemistry of paraffin-embedded Human liver cancer tissue using ml163528(PIAS3 Antibody) at dilution 1/55, on the right is treated with synthetic peptide. (Original magnification:  $\times 200$ )

Predicted cell location: Cytoplasm or Nucleus

Positive control: Human ovarian cancer

Recommended dilution: 40-200



The image on the left is immunohistochemistry of paraffin-embedded Human ovarian cancer tissue using ml163528(PIAS3 Antibody) at dilution 1/55, on the right is treated with synthetic peptide. (Original magnification:  $\times 200$ )

##### ELISA

Recommended dilution: 5000-10000

联系电话: 4008-898-798, 021-61725725

联系QQ: 2881505695, 2881505696

邮箱: [mlbio\\_cn@yeah.net](mailto:mlbio_cn@yeah.net)

网址: [www.mlbio.cn](http://www.mlbio.cn)