

## Anti-ELL2 antibody

<b>Cat. No.</b>	ml163774
<b>Package</b>	25 µl/100 µl/200 µl
<b>Storage</b>	-20°C, pH7.4 PBS, 0.05% NaN <sub>3</sub> , 40% Glycerol

### Product overview

<b>Description</b>	Anti-ELL2 rabbit polyclonal antibody
<b>Applications</b>	ELISA, IHC
<b>Immunogen</b>	Synthetic peptide of human ELL2
<b>Reactivity</b>	Human, Mouse
<b>Content</b>	0.66 mg/ml
<b>Host species</b>	Rabbit
<b>Ig class</b>	Immunogen-specific rabbit IgG
<b>Purification</b>	Antigen affinity purification

### Target information

<b>Symbol</b>	ELL2
<b>Full name</b>	elongation factor for RNA polymerase II 2
<b>Synonyms</b>	
<b>Swissprot</b>	O00472

### Target Background

ELL2 (RNA polymerase II elongation factor ELL2) is a 640 amino acid nuclear protein that belongs to the ELL/occludin family. This family is defined by a highly conserved domain of approximately 100 amino residues found within all eukaryotic occludin proteins and the RNA polymerase II elongation factor ELL. These elongation factors activate elongation by suppressing transient pausing by polymerase at many sites along the DNA and govern its interaction with RNA polymerase II and the ternary elongation complex. ELL2 may also contain a novel type of RNA polymerase II interaction domain that is capable of negatively regulating polymerase activity in promoter-specific transcription initiation in vitro.

订购热线: 4008-898-798

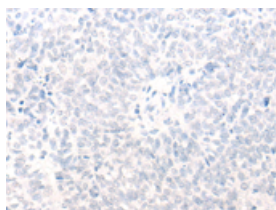
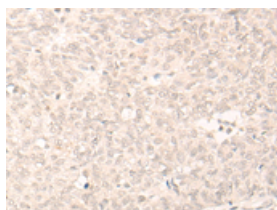
## Applications

### Immunohistochemistry

Predicted cell location: Nucleus

Positive control: Human ovarian cancer

Recommended dilution: 25-100

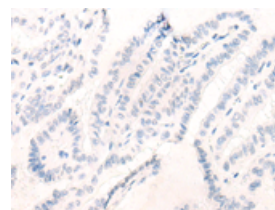
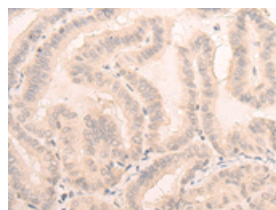


The image on the left is immunohistochemistry of paraffin-embedded Human ovarian cancer tissue using ml163774(ELL2 Antibody) at dilution 1/20, on the right is treated with synthetic peptide. (Original magnification:  $\times 200$ )

Predicted cell location: Nucleus

Positive control: Human thyroid cancer

Recommended dilution: 25-100



The image on the left is immunohistochemistry of paraffin-embedded Human thyroid cancer tissue using ml163774(ELL2 Antibody) at dilution 1/20, on the right is treated with synthetic peptide. (Original magnification:  $\times 200$ )

### ELISA

Recommended dilution: 5000-10000

联系电话: 4008-898-798, 021-61725725

联系QQ: 2881505695, 2881505696

邮箱: [mlbio\\_cn@yeah.net](mailto:mlbio_cn@yeah.net)

网址: [www.mlbio.cn](http://www.mlbio.cn)