

Anti-ETAA1 antibody

Cat. No.	ml163834
Package	25 µl/100 µl/200 µl
Storage	-20°C, pH7.4 PBS, 0.05% NaN ₃ , 40% Glycerol

Product overview

Description	Anti-ETAA1 rabbit polyclonal antibody
Applications	ELISA, IHC
Immunogen	Synthetic peptide of human ETAA1
Reactivity	Human
Content	0.66 mg/ml
Host species	Rabbit
Ig class	Immunogen-specific rabbit IgG
Purification	Antigen affinity purification

Target information

Symbol	ETAA1
Full name	ETAA1, ATR kinase activator
Synonyms	ETAA16
Swissprot	Q9NY74

Target Background

ETAA1 (Ewing's tumor-associated antigen 1), also known as ETAA16, is a 926 amino acid cytoplasmic protein that is highly expressed in kidney, brain, liver and Ewing tumor cell lines. ETAA1 undergoes post-translational phosphorylation following DNA damage, most likely by either ATM or ATR, and is suggested to function as a tumour-specific cell surface antigen in Ewing's family of tumour cell lines. The gene encoding ETAA1 maps to human chromosome 2, which consists of 237 million bases, encodes over 1,400 genes and makes up approximately 8% of the human genome. A number of genetic diseases are linked to genes on chromosome 2 including Harlequin ichthyosis, sitosterolemia and Alstrom syndrome.

订购热线: 4008-898-798

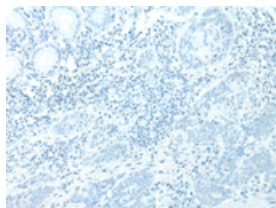
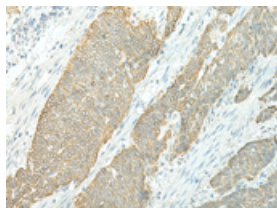
Applications

Immunohistochemistry

Predicted cell location: Cell membrane

Positive control: Human esophagus cancer

Recommended dilution: 30-150

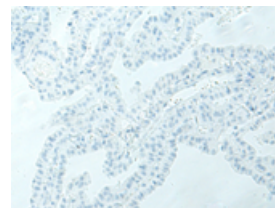
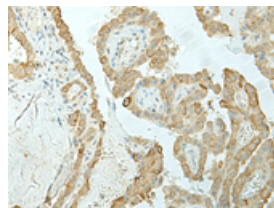


The image on the left is immunohistochemistry of paraffin-embedded Human esophagus cancer tissue using ml163834(ETAA1 Antibody) at dilution 1/25, on the right is treated with synthetic peptide. (Original magnification: $\times 200$)

Predicted cell location: Cell membrane

Positive control: Human thyroid cancer

Recommended dilution: 30-150



The image on the left is immunohistochemistry of paraffin-embedded Human thyroid cancer tissue using ml163834(ETAA1 Antibody) at dilution 1/25, on the right is treated with synthetic peptide. (Original magnification: $\times 200$)

ELISA

Recommended dilution: 5000-10000

联系电话: 4008-898-798, 021-61725725

联系QQ: 2881505695, 2881505696

邮箱: mlbio_cn@yeah.net

网址: www.mlbio.cn