

Anti-EVI2B antibody

Cat. No.	ml163839
Package	25 µl/100 µl/200 µl
Storage	-20°C, pH7.4 PBS, 0.05% NaN ₃ , 40% Glycerol

Product overview

Description	Anti-EVI2B rabbit polyclonal antibody
Applications	ELISA, IHC
Immunogen	Synthetic peptide of human EVI2B
Reactivity	Human, Mouse
Content	0.48 mg/ml
Host species	Rabbit
Ig class	Immunogen-specific rabbit IgG
Purification	Antigen affinity purification

Target information

Symbol	EVI2B
Full name	ecotropic viral integration site 2B
Synonyms	EVDB; CD361; D17S376
Swissprot	P34910

Target Background

EVI2B, also known as CD361. CD361 is a poorly characterized type I transmembrane protein, expressed from one of three genes embedded in intron 27b of the neurofibromatosis type 1 (NF1) gene. The DNA strand that is transcribed to produce CD361 is the complementary one to the strand encoding NF1. Murine homolog to human CD361 is associated with ecotropic viral insertions, which have been implicated in the expression of murine myeloid leukemias. CD361 has been also reported to be involved in melanocyte and keratinocyte differentiation. However, it is expressed mainly in peripheral blood and bone marrow.

订购热线: 4008-898-798

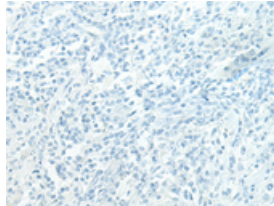
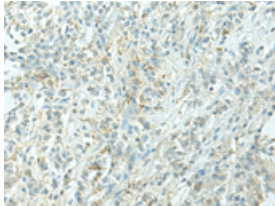
Applications

Immunohistochemistry

Predicted cell location: Cytoplasm and Cell membrane

Positive control: Human liver cancer

Recommended dilution: 20-100



The image on the left is immunohistochemistry of paraffin-embedded Human liver cancer tissue using ml163839(EVI2B Antibody) at dilution 1/20, on the right is treated with synthetic peptide. (Original magnification: $\times 200$)

ELISA

Recommended dilution: 5000-10000

联系电话: 4008-898-798, 021-61725725

联系QQ: 2881505695, 2881505696

邮箱: mlbio_cn@yeah.net

网址: www.mlbio.cn