

Anti-EVX1 antibody

Cat. No.	ml163840
Package	25 µl/100 µl/200 µl
Storage	-20°C, pH7.4 PBS, 0.05% NaN ₃ , 40% Glycerol

Product overview

Description	Anti-EVX1 rabbit polyclonal antibody
Applications	ELISA, IHC
Immunogen	Synthetic peptide of human EVX1
Reactivity	Human, Mouse
Content	0.6 mg/ml
Host species	Rabbit
Ig class	Immunogen-specific rabbit IgG
Purification	Antigen affinity purification

Target information

Symbol	EVX1
Full name	even-skipped homeobox 1
Synonyms	EVX-1
Swissprot	P49640

Target Background

This gene encodes a member of the even-skipped homeobox family characterized by the presence of a homeodomain closely related to the *Drosophila* even-skipped (*eve*) segmentation gene of the pair-rule class. The encoded protein may play an important role as a transcriptional repressor during embryogenesis.

订购热线: 4008-898-798

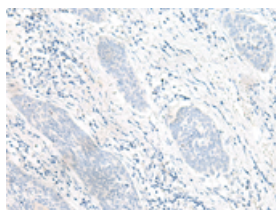
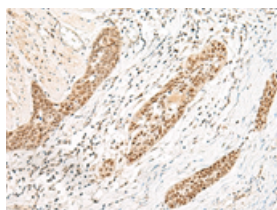
Applications

Immunohistochemistry

Predicted cell location: Nucleus

Positive control: Human esophagus cancer

Recommended dilution: 20-100

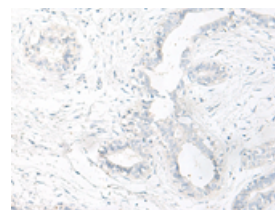
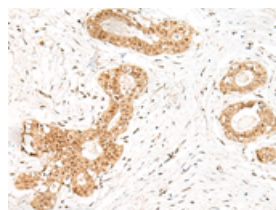


The image on the left is immunohistochemistry of paraffin-embedded Human esophagus cancer tissue using ml163840(EVX1 Antibody) at dilution 1/20, on the right is treated with synthetic peptide. (Original magnification: $\times 200$)

Predicted cell location: Nucleus

Positive control: Human breast cancer

Recommended dilution: 20-100



The image on the left is immunohistochemistry of paraffin-embedded Human breast cancer tissue using ml163840(EVX1 Antibody) at dilution 1/20, on the right is treated with synthetic peptide. (Original magnification: $\times 200$)

ELISA

Recommended dilution: 5000-10000

联系电话: 4008-898-798, 021-61725725

联系QQ: 2881505695, 2881505696

邮箱: mlbio_cn@yeah.net

网址: www.mlbio.cn