

Anti-PIEZO2 antibody

Cat. No.	ml163878
Package	25 µl/100 µl/200 µl
Storage	-20°C, pH7.4 PBS, 0.05% NaN ₃ , 40% Glycerol

Product overview

Description	Anti-PIEZO2 rabbit polyclonal antibody
Applications	ELISA, IHC
Immunogen	Synthetic peptide of human PIEZO2
Reactivity	Human, Mouse
Content	1.62 mg/ml
Host species	Rabbit
Ig class	Immunogen-specific rabbit IgG
Purification	Antigen affinity purification

Target information

Symbol	PIEZO2
Full name	piezo type mechanosensitive ion channel component 2
Synonyms	DA3; DA5; MWKS; DAIP; FAM38B; HsT748; HsT771; FAM38B2; C18orf30; C18orf58
Swissprot	Q9H5I5

Target Background

The protein encoded by this gene contains more than thirty transmembrane domains and likely functions as part of mechanically-activated (MA) cation channels. These channels serve to connect mechanical forces to biological signals. The encoded protein quickly adapts MA currents in somatosensory neurons. Defects in this gene are a cause of type 5 distal arthrogryposis. Several alternatively spliced transcript variants of this gene have been described, but their full-length nature is not known.

订购热线: 4008-898-798

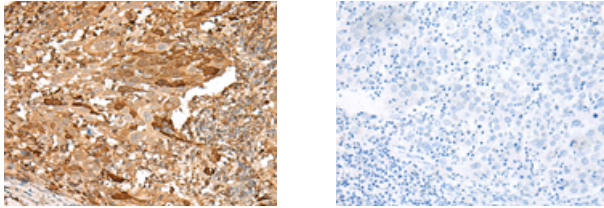
Applications

Immunohistochemistry

Predicted cell location: Cytoplasm

Positive control: Human cervical cancer

Recommended dilution: 50-300



The image on the left is immunohistochemistry of paraffin-embedded Human cervical cancer tissue using ml163878(PIEZO2 Antibody) at dilution 1/55, on the right is treated with synthetic peptide. (Original magnification: $\times 200$)

ELISA

Recommended dilution: 5000-10000

联系电话: 4008-898-798, 021-61725725

联系QQ: 2881505695, 2881505696

邮箱: mlbio_cn@yeah.net

网址: www.mlbio.cn