

## Anti-FHOD1 antibody

<b>Cat. No.</b>	ml163915
<b>Package</b>	25 µl/100 µl/200 µl
<b>Storage</b>	-20°C, pH7.4 PBS, 0.05% NaN <sub>3</sub> , 40% Glycerol

### Product overview

<b>Description</b>	Anti-FHOD1 rabbit polyclonal antibody
<b>Applications</b>	ELISA, IHC
<b>Immunogen</b>	Synthetic peptide of human FHOD1
<b>Reactivity</b>	Human, Mouse
<b>Content</b>	0.84 mg/ml
<b>Host species</b>	Rabbit
<b>Ig class</b>	Immunogen-specific rabbit IgG
<b>Purification</b>	Antigen affinity purification

### Target information

<b>Symbol</b>	FHOD1
<b>Full name</b>	formin homology 2 domain containing 1
<b>Synonyms</b>	FHOS
<b>Swissprot</b>	Q9Y613

### Target Background

This gene encodes a protein which is a member of the formin/diaphanous family of proteins. The gene is ubiquitously expressed but is found in abundance in the spleen. The encoded protein has sequence homology to diaphanous and formin proteins within the Formin Homology (FH)1 and FH2 domains. It also contains a coiled-coil domain, a collagen-like domain, two nuclear localization signals, and several potential PKC and PKA phosphorylation sites. It is a predominantly cytoplasmic protein and is expressed in a variety of human cell lines. Alternative splicing results in multiple transcript variants.

订购热线: 4008-898-798

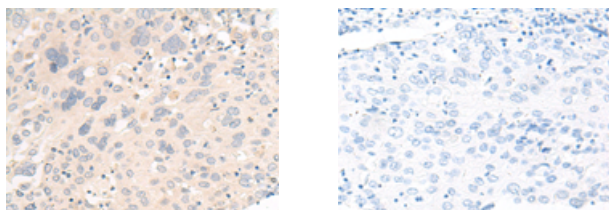
#### Applications

##### Immunohistochemistry

Predicted cell location: Cytoplasm

Positive control: Human cervical cancer

Recommended dilution: 20-100



The image on the left is immunohistochemistry of paraffin-embedded Human cervical cancer tissue using ml163915(FHOD1 Antibody) at dilution 1/30, on the right is treated with synthetic peptide. (Original magnification:  $\times 200$ )

##### ELISA

Recommended dilution: 5000-10000

联系电话: 4008-898-798, 021-61725725

联系QQ: 2881505695, 2881505696

邮箱: [mlbio\\_cn@yeah.net](mailto:mlbio_cn@yeah.net)

网址: [www.mlbio.cn](http://www.mlbio.cn)