

Anti-PLBD1 antibody

Cat. No.	ml163923
Package	25 µl/100 µl/200 µl
Storage	-20°C, pH7.4 PBS, 0.05% NaN ₃ , 40% Glycerol

Product overview

Description	Anti-PLBD1 rabbit polyclonal antibody
Applications	ELISA, IHC
Immunogen	Synthetic peptide of human PLBD1
Reactivity	Human
Content	0.66 mg/ml
Host species	Rabbit
Ig class	Immunogen-specific rabbit IgG
Purification	Antigen affinity purification

Target information

Symbol	PLBD1
Full name	phospholipase B domain containing 1
Synonyms	
Swissprot	Q6P4A8

Target Background

In view of the small size of the putative binding pocket, it has been proposed that it may act as an amidase or a peptidase (By similarity). Exhibits a weak phospholipase activity, acting on various phospholipids, including phosphatidylcholine, phosphatidylinositol, phosphatidylethanolamine and lysophospholipids.

订购热线: 4008-898-798

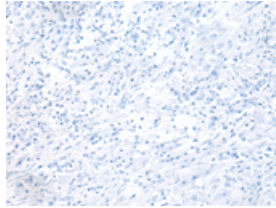
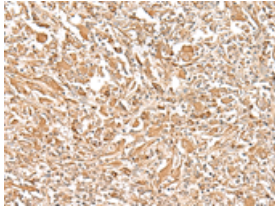
Applications

Immunohistochemistry

Predicted cell location: Cytoplasm

Positive control: Human liver cancer

Recommended dilution: 30-150



The image on the left is immunohistochemistry of paraffin-embedded Human liver cancer tissue using ml163923(PLBD1 Antibody) at dilution 1/25, on the right is treated with synthetic peptide. (Original magnification: $\times 200$)

ELISA

Recommended dilution: 5000-10000

联系电话: 4008-898-798, 021-61725725

联系QQ: 2881505695, 2881505696

邮箱: mlbio_cn@yeah.net

网址: www.mlbio.cn