

Anti-GARNL3 antibody

Cat. No.	ml163967
Package	25 µl/100 µl/200 µl
Storage	-20°C, pH7.4 PBS, 0.05% NaN ₃ , 40% Glycerol

Product overview

Description	Anti-GARNL3 rabbit polyclonal antibody
Applications	ELISA, IHC
Immunogen	Synthetic peptide of human GARNL3
Reactivity	Human, Mouse
Content	0.96 mg/ml
Host species	Rabbit
Ig class	Immunogen-specific rabbit IgG
Purification	Antigen affinity purification

Target information

Symbol	GARNL3
Full name	GTPase activating Rap/RanGAP domain like 3
Synonyms	bA356B19.1
Swissprot	Q5VWW2

Target Background

The function of this protein remains unknown.

订购热线: 4008-898-798

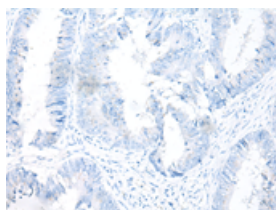
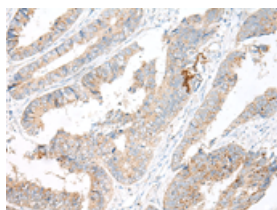
Applications

Immunohistochemistry

Predicted cell location: Cell membrane

Positive control: Human colorectal cancer

Recommended dilution: 40-200

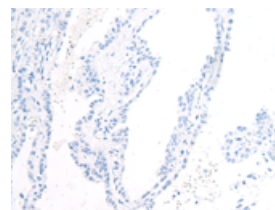
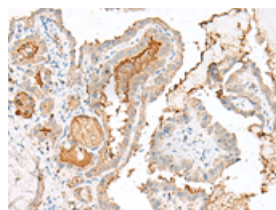


The image on the left is immunohistochemistry of paraffin-embedded Human colorectal cancer tissue using ml163967(GARNL3 Antibody) at dilution 1/60, on the right is treated with synthetic peptide. (Original magnification: $\times 200$)

Predicted cell location: Cell membrane

Positive control: Human thyroid cancer

Recommended dilution: 40-200



The image on the left is immunohistochemistry of paraffin-embedded Human thyroid cancer tissue using ml163967(GARNL3 Antibody) at dilution 1/60, on the right is treated with synthetic peptide. (Original magnification: $\times 200$)

ELISA

Recommended dilution: 5000-10000

联系电话: 4008-898-798, 021-61725725

联系QQ: 2881505695, 2881505696

邮箱: mlbio_cn@yeah.net

网址: www.mlbio.cn