

Anti-GPR153 antibody

Cat. No.	ml164098
Package	25 µl/100 µl/200 µl
Storage	-20°C, pH7.4 PBS, 0.05% NaN ₃ , 40% Glycerol

Product overview

Description	Anti-GPR153 rabbit polyclonal antibody
Applications	ELISA, IHC
Immunogen	Synthetic peptide of human GPR153
Reactivity	Human
Content	1.08 mg/ml
Host species	Rabbit
Ig class	Immunogen-specific rabbit IgG
Purification	Antigen affinity purification

Target information

Symbol	GPR153
Full name	G protein-coupled receptor 153
Synonyms	PGR1
Swissprot	Q6NV75

Target Background

This gene encodes an integral membrane protein that belongs to the Class A rhodopsin superfamily of G protein coupled receptors. The encoded protein is expressed primarily in the central nervous system. A knockdown of the orthologous gene in rat is associated with a significant reduction in food intake and impaired decision making ability. Mutations in this gene are associated with schizophrenia, autism, and other neuropsychiatric disorders. The expression of this gene is activated by the glioma-associated oncogene homolog 1 transcription factor which, in turn, is activated by sonic hedgehog in normal and tumorigenic cells.

订购热线: 4008-898-798

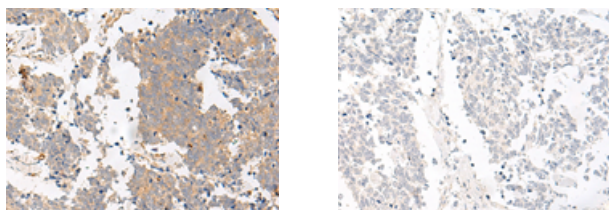
Applications

Immunohistochemistry

Predicted cell location: Cytoplasm

Positive control: Human lung cancer

Recommended dilution: 30-150



The image on the left is immunohistochemistry of paraffin-embedded Human lung cancer tissue using ml164098(GPR153 Antibody) at dilution 1/40, on the right is treated with synthetic peptide. (Original magnification: $\times 200$)

ELISA

Recommended dilution: 5000-10000

联系电话: 4008-898-798, 021-61725725

联系QQ: 2881505695, 2881505696

邮箱: mlbio_cn@yeah.net

网址: www.mlbio.cn