

Anti-MAPK8IP3 antibody

Cat. No.	ml164293
Package	25 µl/100 µl/200 µl
Storage	-20°C, pH7.4 PBS, 0.05% NaN ₃ , 40% Glycerol

Product overview

Description	Anti-MAPK8IP3 rabbit polyclonal antibody
Applications	ELISA, IHC
Immunogen	Synthetic peptide of human MAPK8IP3
Reactivity	Human
Content	1.26 mg/ml
Host species	Rabbit
Ig class	Immunogen-specific rabbit IgG
Purification	Antigen affinity purification

Target information

Symbol	MAPK8IP3
Full name	mitogen-activated protein kinase 8 interacting protein 3
Synonyms	syd; JIP3; SYD2; JIP-3; JSAP1
Swissprot	Q9UPT6

Target Background

The protein encoded by this gene shares similarity with the product of Drosophila syd gene, required for the functional interaction of kinesin I with axonal cargo. Studies of the similar gene in mouse suggested that this protein may interact with, and regulate the activity of numerous protein kinases of the JNK signaling pathway, and thus function as a scaffold protein in neuronal cells. The C. elegans counterpart of this gene is found to regulate synaptic vesicle transport possibly by integrating JNK signaling and kinesin-1 transport. Several alternatively spliced transcript variants of this gene have been described, but the full-length nature of some of these variants has not been determined.

订购热线: 4008-898-798

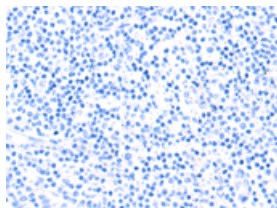
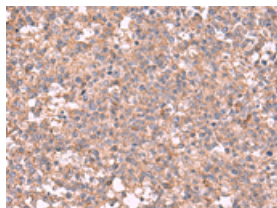
Applications

Immunohistochemistry

Predicted cell location: Cytoplasm

Positive control: Human tonsil

Recommended dilution: 40-200

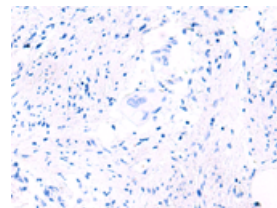
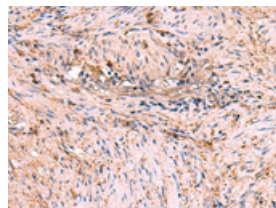


The image on the left is immunohistochemistry of paraffin-embedded Human tonsil tissue using ml164293(MAPK8IP3 Antibody) at dilution 1/45, on the right is treated with synthetic peptide. (Original magnification: $\times 200$)

Predicted cell location: Cytoplasm

Positive control: Human cervical cancer

Recommended dilution: 40-200



The image on the left is immunohistochemistry of paraffin-embedded Human cervical cancer tissue using ml164293(MAPK8IP3 Antibody) at dilution 1/45, on the right is treated with synthetic peptide. (Original magnification: $\times 200$)

ELISA

Recommended dilution: 5000-10000

联系电话: 4008-898-798, 021-61725725

联系QQ: 2881505695, 2881505696

邮箱: mlbio_cn@yeah.net

网址: www.mlbio.cn