

Anti-ANXA7 antibody

Cat. No.	ml220067
Package	25 µl/100 µl/200 µl
Storage	-20°C, pH7.4 PBS, 0.05% NaN ₃ , 40% Glycerol

Product overview

Description	Anti-ANXA7 rabbit polyclonal antibody
Applications	ELISA, IHC
Immunogen	Fusion protein of human ANXA7
Reactivity	Human, Mouse
Content	0.8 mg/ml
Host species	Rabbit
Ig class	Immunogen-specific rabbit IgG
Purification	Antigen affinity purification

Target information

Symbol	ANXA7
Full name	Annexin A7
Synonyms	SNX, ANX7, SYNEXIN
Swissprot	P20073

Target Background

Annexin VII is a member of the annexin family of calcium-dependent phospholipid binding proteins. The Annexin VII gene contains 14 exons and spans approximately 34 kb of DNA. An alternatively spliced cassette exon results in two mRNA transcripts of 2.0 and 2.4 kb which are predicted to generate two protein isoforms differing in their N-terminal domain. The alternative splicing event is tissue specific and the mRNA containing the cassette exon is prevalent in brain, heart and skeletal muscle. The transcripts also differ in their 3'-non coding regions by the use of two alternative poly(A) signals. Annexin VII encodes a protein with a molecular weight of approximately 51 kDa with a unique, highly hydrophobic N-terminal domain of 167 amino acids and a conserved C-terminal region of 299 amino acids. The latter domain is composed of alternating hydrophobic and hydrophilic segments. Structural analysis of the protein suggests that Annexin VII is a membrane binding protein with diverse properties, including voltage-sensitive calcium channel activity, ion selectivity and membrane fusion.

订购热线: 4008-898-798

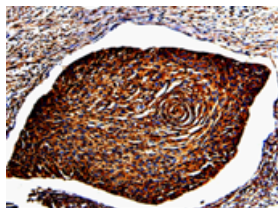
Applications

Immunohistochemistry

Predicted cell location: Cytoplasm, Cell membrane

Positive control: Human cervical cancer

Recommended dilution: 150-300

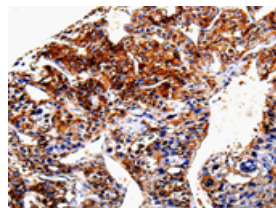


The image is immunohistochemistry of paraffin-embedded Human cervical cancer tissue using ml220067(ANXA7 Antibody) at dilution 1/150. (Original magnification: ×200)

Predicted cell location: Cytoplasm, Cell membrane

Positive control: Human liver cancer

Recommended dilution: 150-300



The image is immunohistochemistry of paraffin-embedded Human liver cancer tissue using ml220067(ANXA7 Antibody) at dilution 1/150. (Original magnification: ×200)

ELISA

Recommended dilution: 1000-8000

联系电话: 4008-898-798, 021-61725725

联系QQ: 2881505695, 2881505696

邮箱: mlbio_cn@yeah.net

网址: www.mlbio.cn