

Anti-JUN antibody

Cat. No.	ml220068
Package	25 µl/100 µl/200 µl
Storage	-20°C, pH7.4 PBS, 0.05% NaN ₃ , 40% Glycerol

Product overview

Description	Anti-JUN rabbit polyclonal antibody
Applications	ELISA, IHC
Immunogen	Fusion protein of human JUN
Reactivity	Human, Mouse, Rat
Content	0.2 mg/ml
Host species	Rabbit
Ig class	Immunogen-specific rabbit IgG
Purification	Antigen affinity purification

Target information

Symbol	JUN
Full name	jun proto-oncogene
Synonyms	AP1; AP-1; c-Jun
Swissprot	P05412

Target Background

This gene is the putative transforming gene of avian sarcoma virus 17. It encodes a protein which is highly similar to the viral protein, and which interacts directly with specific target DNA sequences to regulate gene expression. This gene is intronless and is mapped to 1p32-p31, a chromosomal region involved in both translocations and deletions in human malignancies.

订购热线: 4008-898-798

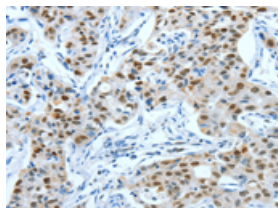
Applications

Immunohistochemistry

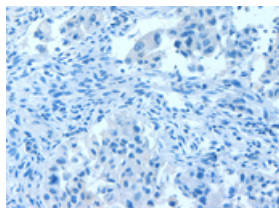
Predicted cell location: Nucleus

Positive control: Human lung cancer

Recommended dilution: 25-100



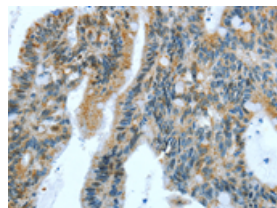
The image on the left is immunohistochemistry of paraffin-embedded Human lung cancer tissue using ml220068(JUN Antibody) at dilution 1/30, on the right is treated with fusion protein. (Original magnification: $\times 200$)



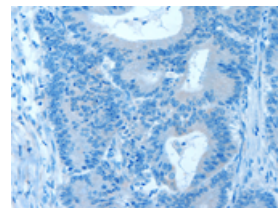
Predicted cell location: Nucleus

Positive control: Human colon cancer

Recommended dilution: 25-100



The image on the left is immunohistochemistry of paraffin-embedded Human colon cancer tissue using ml220068(JUN Antibody) at dilution 1/30, on the right is treated with fusion protein. (Original magnification: $\times 200$)



ELISA

Recommended dilution: 2000-5000

联系电话: 4008-898-798, 021-61725725

联系QQ: 2881505695, 2881505696

邮箱: mlbio_cn@yeah.net

网址: www.mlbio.cn